

Sree Siddaganga College of Arts, Science & Commerce for women, Tumkur - 2

ACADEMIC YEAR PLANNER 2018-19.

Date	Jun-18		Jul-18		Aug-18		Sep-18		Oct-18	
	Day	Events/Programs	Day	Events/Programs	Day	Events/Programs	Day	Events/Programs	Day	Events/Programs
1	FRI		SUN		WED		SAT		MON	
2	SAT		MON		THU		SUN		TUE	Gandhi Jayanti
3	SUN		TUE		FRI		MON		WED	Practical Exam Starts
4	MON		WED		SAT	Forum of History	TUE		THU	
5	TUE		THU		SUN		WED		FRI	
6	WED		FRI		MON		THU	Forum of Physical Sci.	SAT	
7	THU		SAT		TUE	Spoorthi Inauguration	FRI		SUN	
8	FRI		SUN		WED		SAT		MON	Mahalayaamahavasye
9	SAT		MON		THU		SUN		TUE	
10	SUN		TUE	Induction Program	FRI	Forum of Comp. Sci.	SUN		WED	
11	MON		WED		SAT		MON		THU	
12	TUE		THU		SUN		TUE		WED	
13	WED		FRI		MON		WED	Gowri Festival	THU	
14	THU		SAT		TUE		THU	Ganesha festival	FRI	HOD's Meeting
15	FRI	HOD's Meeting	SUN		WED		FRI		SAT	Staff Council Meeting
16	SAT		MON		THU	Independence Day	SAT		SUN	
17	SUN		TUE		THU		SUN	Forum of Kannada	MON	Last Working Day
18	MON	College Reopens	WED		FRI	Forum of Mathematics	MON		TUE	
19	TUE		THU	Forum of Economics.	SAT		TUE		WED	
20	WED	HOD's Meeting	FRI	Forum of Life Sci.	SUN		THU	Forum of English	FRI	Ayudha Pooja
1	THU	International Yoga Day	SAT		MON	Forum of Comm. & Magt.	THU	Moharam	FRI	Vijaya Dashami
2	FRI	Commencement of odd sem	SUN		TUE		FRI	C R Meeting	SAT	
3	SAT	Staff Council Meeting	MON		WED		SAT	C R Meeting	SUN	
4	SUN		MON		THU	Bakrid	SAT	C R Meeting	MON	Theory Exams
5	MON		TUE	C R Meeting	FRI		SUN		TUE	
6	TUE		WED	C R Meeting	SAT	Varmahalakshmi	MON	TEST	WED	Valmiki Jayanthi
7	WED		THU	Forum of Pol Sci.	SUN		TUE	TEST	THU	
8	THU	Orientation Prog for Teachers	FRI		MON		WED	TEST	FRI	
9	FRI		SAT	HOD's Meeting	TUE	Women Empowerment Cell	THU	HOD's Meeting	SAT	
10	SUN		SUN		WED	HOD's Meeting	FRI	Staff Council Meeting	SUN	
11	MON		MON	Staff Council Meeting	THU	Staff Council Meeting	SAT	Monthly Report SSES	MON	
12	TUE		TUE	Monthly Report SSES	FRI	Monthly Report SSES	SUN		TUE	Monthly Report SSES
13	WED		WED		SAT		MON		WED	

Working Days - 8
 Teaching Days - 8
 Total Days - 91
 Exam Work - 22-10-2018
 Even Semester Starts - 17-12-2018
 Vacation For I / III / V - 18-10-2018 to 10-12-2018

ACADEMIC YEAR PLANNER 2017-2018
I, III & V Semesters

Date	Jun-17		Jul-17		Aug-17		Sep-17		Oct-17	
	Day	Events/Programs	Day	Events/Programs	Day	Events/Programs	Day	Events/Programs	Day	Events/Programs
Thu		Sat	Tue		Fri	Forum of Management Studies	Fri	Forum of Management Studies	Sun	Mohararam
Fri		Sun	Wed	Cultural activities ,NSS & Sports Inauguration	Sat	Bakrid	Sat	Bakrid	Mon	Ghandi Jayanthi
Sat		Mon	Thu		Sun		Sun		Tue	
Sun		Tue	Fri	Varamahalakshmi	Mon		Mon		Wed	
Mon		Wed	Sat		Tue	Forum of Physical science	Tue	Forum of Physical science	Thu	Valmiki Jayanthi
Tue		Thu	Sun		Wed		Wed		Fri	
Wed		Fri	Mon	Forum of Life Science	Thu		Thu		Sat	
Thu	College Re Open	Sat	Tue	Quit India Day	Fri		Fri		Sun	
Fri	HOD Meeting	Sun	Wed		Sat	Forum of Computer Science	Sat	Forum of Computer Science	Mon	
Sat		Mon	Thu		Sun		Sun		Tue	Women Empowerment Cell
Sun		Tue	Fri	Forum of Economics	Mon		Mon		Wed	HOD Meeting
Mon		Wed	Sat		Tue		Tue		Thu	Commencement of Practical Exam
Tue		Thu	Sun		Wed		Wed		Fri	End of Classes & Staff Council Meeting
Wed		Fri	Mon		Thu		Thu		Sat	
Thu		Sat	Tue	Independence Day	Fri		Fri		Sun	
Fri		Sun	Wed		Sat		Sat		Mon	
Sat		Mon	Thu	Forum of Commerce	Sun		Sun		Tue	
Sun		Tue	Fri		Mon		Mon		Wed	Naraka Chaturdashi
Mon	Commencement of Odd Sem Calsses	Wed	Sat		Tue		Tue		Thu	
Tue	Staff Council/Meeting	Thu	Sun		Wed		Wed		Fri	Bali Padiyami
Wed		Fri	Mon	Forum of Pol. Sci	Thu		Thu		Sat	
Thu		Sat	Tue		Fri		Fri		Sun	
Fri		Sun	Wed		Sat		Sat		Mon	
Sat	Orientation Program for Teacher	Mon	Thu	Gowri Festival	Sun		Sun		Tue	
Sun		Tue	Fri	Ganesha Festival	Mon		Mon		Wed	
Mon	Ramzan	Wed	Sat		Tue		Tue		Thu	
Tue		Thu	Sun		Wed		Wed		Fri	
Wed		Fri	Mon	HOD Meeting	Thu		Thu		Sat	
Thu		Sat	Tue	Monthly Report SSES	Fri		Fri		Sun	
Fri		Sun	Wed		Sat		Sat		Mon	
		Mon	Thu	I Test / Assignment	Tue		Tue		Wed	
		Tue	Fri		Mon		Mon		Thu	
		Wed	Sun		Tue		Tue		Wed	
		Thu	Mon	HOD Meeting	Wed		Wed		Thu	
		Fri	Tue	Monthly Report SSES	Thu		Thu		Fri	
		Sat	Wed		Fri		Fri		Sat	
		Sun	Thu	HOD Meeting	Sat		Sat		Sun	
		Mon	Fri	Monthly Report SSES	Sun		Sun		Mon	
		Tue	Sat	I Test / Assignment	Mon		Mon		Tue	
		Wed	Sun		Tue		Tue		Wed	
		Thu	Mon		Wed		Wed		Thu	
		Fri	Tue		Thu		Thu		Fri	
		Sat	Wed		Fri		Fri		Sat	
		Sun	Thu		Sat		Sat		Sun	
		Mon	Fri		Sun		Sun		Mon	
		Tue	Sat		Mon		Mon		Tue	
		Wed	Sun		Tue		Tue		Wed	
		Thu	Mon		Wed		Wed		Thu	
		Fri	Tue		Thu		Thu		Fri	
		Sat	Wed		Fri		Fri		Sat	
		Sun	Thu		Sat		Sat		Sun	
		Mon	Fri		Sun		Sun		Mon	
		Tue	Sat		Mon		Mon		Tue	
		Wed	Sun		Tue		Tue		Wed	
		Thu	Mon		Wed		Wed		Thu	
		Fri	Tue		Thu		Thu		Fri	
		Sat	Wed		Fri		Fri		Sat	
		Sun	Thu		Sat		Sat		Sun	
		Mon	Fri		Sun		Sun		Mon	
		Tue	Sat		Mon		Mon		Tue	
		Wed	Sun		Tue		Tue		Wed	
		Thu	Mon		Wed		Wed		Thu	
		Fri	Tue		Thu		Thu		Fri	
		Sat	Wed		Fri		Fri		Sat	
		Sun	Thu		Sat		Sat		Sun	
		Mon	Fri		Sun		Sun		Mon	
		Tue	Sat		Mon		Mon		Tue	
		Wed	Sun		Tue		Tue		Wed	
		Thu	Mon		Wed		Wed		Thu	
		Fri	Tue		Thu		Thu		Fri	
		Sat	Wed		Fri		Fri		Sat	
		Sun	Thu		Sat		Sat		Sun	
		Mon	Fri		Sun		Sun		Mon	
		Tue	Sat		Mon		Mon		Tue	
		Wed	Sun		Tue		Tue		Wed	
		Thu	Mon		Wed		Wed		Thu	
		Fri	Tue		Thu		Thu		Fri	
		Sat	Wed		Fri		Fri		Sat	
		Sun	Thu		Sat		Sat		Sun	
		Mon	Fri		Sun		Sun		Mon	
		Tue	Sat		Mon		Mon		Tue	
		Wed	Sun		Tue		Tue		Wed	
		Thu	Mon		Wed		Wed		Thu	
		Fri	Tue		Thu		Thu		Fri	
		Sat	Wed		Fri		Fri		Sat	
		Sun	Thu		Sat		Sat		Sun	
		Mon	Fri		Sun		Sun		Mon	
		Tue	Sat		Mon		Mon		Tue	
		Wed	Sun		Tue		Tue		Wed	
		Thu	Mon		Wed		Wed		Thu	
		Fri	Tue		Thu		Thu		Fri	
		Sat	Wed		Fri		Fri		Sat	
		Sun	Thu		Sat		Sat		Sun	
		Mon	Fri		Sun		Sun		Mon	
		Tue	Sat		Mon		Mon		Tue	
		Wed	Sun		Tue		Tue		Wed	
		Thu	Mon		Wed		Wed		Thu	
		Fri	Tue		Thu		Thu		Fri	
		Sat	Wed		Fri		Fri		Sat	
		Sun	Thu		Sat		Sat		Sun	
		Mon	Fri		Sun		Sun		Mon	
		Tue	Sat		Mon		Mon		Tue	
		Wed	Sun		Tue		Tue		Wed	
		Thu	Mon		Wed		Wed		Thu	
		Fri	Tue		Thu		Thu		Fri	
		Sat	Wed		Fri		Fri		Sat	
		Sun	Thu		Sat		Sat		Sun	
		Mon	Fri		Sun		Sun		Mon	
		Tue	Sat		Mon		Mon		Tue	
		Wed	Sun		Tue		Tue		Wed	
		Thu	Mon		Wed		Wed		Thu	
		Fri	Tue		Thu		Thu		Fri	
		Sat	Wed		Fri		Fri		Sat	
		Sun	Thu		Sat		Sat		Sun	
		Mon	Fri		Sun		Sun		Mon	
		Tue	Sat		Mon		Mon		Tue	
		Wed	Sun		Tue		Tue		Wed	
		Thu	Mon		Wed		Wed		Thu	
		Fri	Tue		Thu		Thu		Fri	
		Sat	Wed		Fri		Fri		Sat	
		Sun	Thu		Sat		Sat		Sun	
		Mon	Fri		Sun		Sun		Mon	
		Tue	Sat		Mon		Mon		Tue	
		Wed	Sun		Tue		Tue		Wed	
		Thu	Mon		Wed		Wed		Thu	
		Fri	Tue		Thu		Thu		Fri	
		Sat	Wed		Fri		Fri		Sat	
		Sun	Thu		Sat		Sat		Sun	
		Mon	Fri		Sun		Sun		Mon	
		Tue	Sat		Mon		Mon		Tue	
		Wed	Sun		Tue		Tue		Wed	
		Thu	Mon		Wed		Wed		Thu	
		Fri	Tue		Thu		Thu		Fri	
		Sat	Wed		Fri		Fri		Sat	
		Sun	Thu		Sat		Sat		Sun	
		Mon	Fri		Sun		Sun		Mon	
		Tue	Sat		Mon		Mon		Tue	
		Wed	Sun		Tue		Tue		Wed	
		Thu	Mon		Wed		Wed		Thu	
		Fri	Tue		Thu		Thu		Fri	
		Sat	Wed		Fri		Fri		Sat	
		Sun	Thu		Sat		Sat		Sun	
		Mon	Fri		Sun		Sun		Mon	
		Tue	Sat		Mon		Mon		Tue	
		Wed	Sun		Tue		Tue		Wed	
		Thu	Mon		Wed		Wed		Thu	
		Fri	Tue		Thu		Thu		Fri	
		Sat	Wed		Fri		Fri		Sat	
		Sun	Thu		Sat		Sat		Sun	
		Mon	Fri		Sun		Sun		Mon	
		Tue	Sat		Mon		Mon		Tue	
		Wed	Sun		Tue		Tue		Wed	
		Thu	Mon		Wed		Wed		Thu	
		Fri	Tue		Thu		Thu		Fri	
		Sat	Wed		Fri		Fri		Sat	
		Sun	Thu		Sat		Sat		Sun	
		Mon	Fri		Sun		Sun		Mon	
		Tue	Sat		Mon		Mon		Tue	
		Wed	Sun		Tue		Tue		Wed	
		Thu	Mon		Wed		Wed		Thu	
		Fri	Tue		Thu		Thu		Fri	
		Sat	Wed		Fri		Fri		Sat	
		Sun	Thu		Sat		Sat		Sun	
		Mon	Fri		Sun		Sun		Mon	
		Tue	S							

Sree Siddaganga College of Arts, Science & Commerce for Women, Tumkur-2

ACADEMIC YEAR PLANNER 2016-2017

I, III & V Semesters

EVENTS/PROGRAMS	JULY-2016		AUGUST-2016		SEPTEMBER-2016		OCTOBER-2016		NOVEMBER-2016	
	DAY	EVENTS/PROGRAMS	DAY	EVENTS/PROGRAMS	DAY	EVENTS/PROGRAMS	DAY	EVENTS/PROGRAMS	DAY	EVENTS/PROGRAMS
	FRI	Commencement of Classes for I Degree	MON		THU	Forum of Management Studies	SAT		TUE	
	SAT		TUE		FRI		SUN	Grand Opening	WED	Monthly Report SSES
	SUN		WED		SAT		MON		THU	
	MON		THU	Forum of Economics	SUN		TUE		FRI	
	TUE		FRI		MON	Ganesh Chaturthi	WED		SAT	
	WED	RAMZAN	SAT	Forum of Commerce	TUE		THU		SUN	
	THU		SUN		WED	Inter Class Athletic Meeting	FRI	Kannada Saanga	MON	Commencement of Exams
	FRI		MON		THU		SAT		TUE	
	SAT		TUE	Inauguration Sports, NSS, Sports	FRI		SUN		WED	
	SUN		WED	Forum of Pol.Sci	SAT		MON	Ayudha Pooja	THU	
	MON		THU		SUN		TUE	Vijaya Dashami	FRI	
	TUE	Health Awareness prog / Orientation Prog / Soft Skill Prog	FRI	Varamahalakshmi	MON		WED	Moharam Last Day	SAT	
	WED		SAT		TUE		THU	HOD Meeting	SUN	
	THU	National Level Seminar Maths	SUN		WED		FRI		MON	
	FRI	Computer Science	MON	Independence Day	THU		SAT	Valmiki Jayanthi	TUE	
	SAT		TUE		FRI		SUN		WED	
	SUN		WED	Forum of Physical Sciences	SAT		MON	Staff Council/Meeting	THU	
	MON		THU		SUN		TUE		FRI	
	TUE		FRI		MON		WED		SAT	
	WED		SAT		TUE		THU	End of Classes	SUN	
	THU	National Level Physics Ele Seminar	SUN		WED	Forum of History	FRI	Commencement Practical Exam	MON	
	FRI		MON	HOD Meeting	THU	Women Empowerment Cell	SAT		TUE	
	SAT		WED	Staff Council/Meeting	FRI		SUN		WED	
	SUN		THU		SAT		MON		THU	
	MON		FRI	Monthly Report SSES	MON		TUE		FRI	
	TUE		FRI		MON		WED		SAT	
	WED	Forum of Life Science	SAT		TUE		THU		SUN	
	THU	Monthly Report SSES	SUN		WED	Monthly Report SSES, III Unit	FRI	Monthly Report SSES	MON	
	FRI	Syllabus Completion I Unit	MON	Syllabus Completion II Unit	THU		SAT	Naraka Chaturdash	TUE	
	SAT	I Test / Assignment	TUE		FRI		SUN	Dipavali	WED	
	SUN		WED	II Test / Assignment	MON		MON	Ebalpadyami	WED	

Vacation for I, III & V SEM - 21.10.2016 To 18.12.2016.

June Jul Aug Sept Oct Total

Sree Siddaganga College of Arts, Science & Commerce for Women, Tumkur-2
ACADEMIC YEAR PLANNER 2015-2016.

II, I/ & VI Semesters

EVENTS/PROGRAMS	JANUARY-2016			FEBRUARY-2016			MARCH-2016			APRIL-2016			MAY-2016		
	DAY	EVENTS/PROGRAMS	DAY	EVENTS/PROGRAMS	DAY	EVENTS/PROGRAMS	DAY	EVENTS/PROGRAMS	DAY	EVENTS/PROGRAMS	DAY	EVENTS/PROGRAMS	DAY	EVENTS/PROGRAMS	
	FRI		MON	Test-I (Dept)	TUE		FRI	Test-II (Dept)	FRI	National Seminar In Physics	SUN		SUN	Mix Day	
	SAT		TUE		WED		WED		SAT		MON		MON		
	SUN		WED		THU		THU	English Forum	SUN		SUN		TUE	Commencement of Exams	
	MON		THU	Management Forum	FRI		FRI		MON		MON		WED		
	TUE		FRI	Pol.Science Forum	SAT		SAT		TUE	College Day	TUE		THU		
	WED		SAT	Inter College Science Competition	SUN		WED		WED		FRI		FRI		
	THU		SUN		MON		MON	Mahashivarathri	THU		SAT		SAT		
	FRI	Sociology Forum	MON	HOD's Meeting	TUE		TUE		FRI	Chandramana Ugadi	SUN		SUN		
	SAT		TUE		WED		WED		SAT		MON	Basava Jayanthi	MON		
	SUN		WED	Staff Council/Meeting	THU		THU		SUN		TUE		TUE		
	MON		THU		FRI		FRI	Forum of Economics	MON		WED		WED		
	TUE		FRI		SAT		SAT		TUE		THU		THU		
	WED		SAT		SUN		SUN		WED		FRI		FRI		
	THU		SUN		MON		MON	HOD's Meeting	THU	Dr. Ambedkar Jayanthi	SAT		SAT		
	FRI		MON		TUE		TUE		FRI	Commencement Practical Exam	SUN		SUN		
	SAT		TUE	Founders day	WED		WED		SAT		MON		MON		
	SUN		WED	spoorthy	THU		THU	Staff Council/Meeting	SUN		TUE		TUE		
	MON		THU	Student Council/Meeting	FRI		MON		MON		WED		WED		
	TUE		FRI	Interclasses Sports	SAT		SAT		TUE	Mahaveera Jayanthi	THU		THU		
	WED		SAT	Interclasses Sports	SUN		SUN		WED	SSES Report	FRI		FRI	SSES Report	
	THU		SUN		MON		MON	Test-III Commen	THU		SAT		SAT		
	FRI		MON	SSES Report	TUE		TUE	SSES Report	FRI	Staff Council/Meeting	SUN		SUN		
SSES Report	SAT		TUE	Commerce Forum	WED		WED		SAT	End of Classes	MON		MON		
Id-Milad	SUN		WED		THU		THU		SUN		TUE		TUE		
Christmas	MON		THU		FRI		FRI	Good Friday	MON		WED		WED		
	TUE		FRI		SAT		SAT		TUE		THU		THU		
	WED		SAT	Syllabus Completion-II	SUN		WED		WED		FRI		FRI		
	THU		SUN		MON		MON	IHS-KAN Inter Discipline Seminar	THU		SAT		SAT		
	FRI		MON	Science Day	TUE		TUE		FRI		SUN		SUN		
Alleges Re- Opens	SAT		WED		WED		WED		SAT		MON		MON		
HOD's Meeting	SUN		THU		THU		THU		TUE		TUE		TUE		

Vacation for I, III & V SEM - 25-04-2016 To 18-06-2016.
 Examination Work-MAY To JUNE-2016.

DEC 02 24 JAN 24 FEB 25 MAR 25 APR 17 17 93 Total

Sree Siddaganga College of Arts, Science & Commerce for Women, Tumkur-2
ACADEMIC YEAR PLANNER 2015-2016

I, III & V Semesters

JUNE 2015	JULY 2015		AUGUST 2015		SEPTEMBER 2015		OCTOBER 2015		NOVEMBER 2015	
	DAY	EVENTS/PROGRAMS	DAY	EVENTS/PROGRAMS	DAY	EVENTS/PROGRAMS	DAY	EVENTS/PROGRAMS	DAY	EVENTS/PROGRAMS
WED		SAT	TUE	Forum of Management Studies	WED		THU	CEP Article Submission	MON	Monthly Report SSES
THU		SUN	WED		THU		FRI		TUE	
FRI		MON	THU		FRI		SAT		WED	
SAT		TUE	FRI	Forum of Economics	SAT		MON		THU	Commencement of Exams
SUN		WED	SAT	Forum of Commerce	SUN		TUE		FRI	
MON		THU	MON	Inauguration Sports, NSS, Sports	MON	III Test	WED	Kannada Singha	SAT	
TUE		FRI	TUE		TUE	III Test	THU		SUN	
WED		SAT	WED		WED	III Test	FRI		MON	
THU		SUN	THU	Forum of Pol.Sci	THU	III Test	SAT		TUE	
FRI		MON	FRI		FRI		MON		WED	
SAT		TUE	SAT		SAT		TUE	HOD Meeting	FRI	
SUN		WED	SUN		SUN		WED		SAT	
MON		THU	MON		MON	Inter Class Athletic	THU	Commencement Practical Exam	SUN	
TUE		FRI	TUE		TUE		FRI		MON	
WED		SAT	WED		WED		SAT		TUE	
THU		SUN	THU		THU		SUN		WED	
FRI	Health Awareness prog./ Orientation Prog. Soft Skill Prog.	MON	FRI		FRI	Forum of Kannada	MON		THU	
SAT		TUE	SAT		SAT		TUE		FRI	
SUN		WED	SUN		SUN		WED		SAT	
MON		THU	MON	Forum of Physical Sciences	MON		THU		FRI	
TUE		FRI	TUE		TUE	Forum of History	WED	Staff Council Meeting	SAT	
WED		SUN	WED		WED	Women Empowerment Cell	THU	Ayudha Pooja	SUN	
THU		MON	THU		THU		FRI	SVJYS Dharma	MON	
FRI		TUE	FRI		FRI		SAT	Moharam Last Day	TUE	
SAT		WED	SAT		SAT		SUN		WED	
SUN		THU	SUN		SUN		MON	End of Classes	THU	
MON		FRI	MON		MON		TUE	Valmiki Jayanti	FRI	
TUE		SAT	TUE		TUE		WED		SAT	Garuda Dasavamsi
WED		SUN	WED	Monthly Report SSES	WED	Monthly Report SSES	THU		SUN	
THU		MON	THU	Syllabus Completion II Unit	THU	Syllabus Completion III Unit	FRI		MON	
FRI		TUE	FRI		FRI		SAT		TUE	
SAT		WED	SAT	Syllabus Completion I Unit	SAT		MON		WED	
SUN		THU	SUN		SUN		THU		FRI	
MON		FRI	MON	II Test / Assignment	MON		SAT		SUN	
TUE		SAT	TUE		TUE		MON		THU	
WED		SUN	WED		WED		FRI		SAT	
THU		MON	THU		THU		SUN		MON	
FRI		TUE	FRI		FRI		TUE		WED	
SAT		WED	SAT		SAT		THU		THU	
SUN		THU	SUN		SUN		FRI		FRI	
MON		FRI	MON		MON		SAT		SAT	
TUE		SUN	TUE		TUE		SUN		SUN	
WED		MON	WED		WED		MON		MON	
THU		TUE	THU		THU		TUE		TUE	
FRI		WED	FRI		FRI		WED		WED	
SAT		THU	SAT		SAT		THU		THU	
SUN		FRI	SUN		SUN		FRI		FRI	
MON		SAT	MON		MON		SAT		SAT	
TUE		SUN	TUE		TUE		SUN		SUN	
WED		MON	WED		WED		MON		MON	
THU		TUE	THU		THU		TUE		TUE	
FRI		WED	FRI		FRI		WED		WED	
SAT		THU	SAT		SAT		THU		THU	
SUN		FRI	SUN		SUN		FRI		FRI	
MON		SAT	MON		MON		SAT		SAT	
TUE		SUN	TUE		TUE		SUN		SUN	
WED		MON	WED		WED		MON		MON	
THU		TUE	THU		THU		TUE		TUE	
FRI		WED	FRI		FRI		WED		WED	
SAT		THU	SAT		SAT		THU		THU	
SUN		FRI	SUN		SUN		FRI		FRI	
MON		SAT	MON		MON		SAT		SAT	
TUE		SUN	TUE		TUE		SUN		SUN	
WED		MON	WED		WED		MON		MON	
THU		TUE	THU		THU		TUE		TUE	
FRI		WED	FRI		FRI		WED		WED	
SAT		THU	SAT		SAT		THU		THU	
SUN		FRI	SUN		SUN		FRI		FRI	
MON		SAT	MON		MON		SAT		SAT	
TUE		SUN	TUE		TUE		SUN		SUN	
WED		MON	WED		WED		MON		MON	
THU		TUE	THU		THU		TUE		TUE	
FRI		WED	FRI		FRI		WED		WED	
SAT		THU	SAT		SAT		THU		THU	
SUN		FRI	SUN		SUN		FRI		FRI	
MON		SAT	MON		MON		SAT		SAT	
TUE		SUN	TUE		TUE		SUN		SUN	
WED		MON	WED		WED		MON		MON	
THU		TUE	THU		THU		TUE		TUE	
FRI		WED	FRI		FRI		WED		WED	
SAT		THU	SAT		SAT		THU		THU	
SUN		FRI	SUN		SUN		FRI		FRI	
MON		SAT	MON		MON		SAT		SAT	
TUE		SUN	TUE		TUE		SUN		SUN	
WED		MON	WED		WED		MON		MON	
THU		TUE	THU		THU		TUE		TUE	
FRI		WED	FRI		FRI		WED		WED	
SAT		THU	SAT		SAT		THU		THU	
SUN		FRI	SUN		SUN		FRI		FRI	
MON		SAT	MON		MON		SAT		SAT	
TUE		SUN	TUE		TUE		SUN		SUN	
WED		MON	WED		WED		MON		MON	
THU		TUE	THU		THU		TUE		TUE	
FRI		WED	FRI		FRI		WED		WED	
SAT		THU	SAT		SAT		THU		THU	
SUN		FRI	SUN		SUN		FRI		FRI	
MON		SAT	MON		MON		SAT		SAT	
TUE		SUN	TUE		TUE		SUN		SUN	
WED		MON	WED		WED		MON		MON	
THU		TUE	THU		THU		TUE		TUE	
FRI		WED	FRI		FRI		WED		WED	
SAT		THU	SAT		SAT		THU		THU	
SUN		FRI	SUN		SUN		FRI		FRI	
MON		SAT	MON		MON		SAT		SAT	
TUE		SUN	TUE		TUE		SUN		SUN	
WED		MON	WED		WED		MON		MON	
THU		TUE	THU		THU		TUE		TUE	
FRI		WED	FRI		FRI		WED		WED	
SAT		THU	SAT		SAT		THU		THU	
SUN		FRI	SUN		SUN		FRI		FRI	
MON		SAT	MON		MON		SAT		SAT	
TUE		SUN	TUE		TUE		SUN		SUN	
WED		MON	WED		WED		MON		MON	
THU		TUE	THU		THU		TUE		TUE	
FRI		WED	FRI		FRI		WED		WED	
SAT		THU	SAT		SAT		THU		THU	
SUN		FRI	SUN		SUN		FRI		FRI	
MON		SAT	MON		MON		SAT		SAT	
TUE		SUN	TUE		TUE		SUN		SUN	
WED		MON	WED		WED		MON		MON	
THU		TUE	THU		THU		TUE		TUE	
FRI		WED	FRI		FRI		WED		WED	
SAT		THU	SAT		SAT		THU		THU	
SUN		FRI	SUN		SUN		FRI		FRI	
MON		SAT	MON		MON		SAT		SAT	
TUE		SUN	TUE		TUE		SUN		SUN	
WED		MON	WED		WED		MON		MON	
THU		TUE	THU		THU		TUE		TUE	
FRI		WED	FRI		FRI		WED		WED	
SAT		THU	SAT		SAT		THU		THU	
SUN		FRI	SUN		SUN		FRI		FRI	
MON		SAT	MON		MON		SAT		SAT	
TUE		SUN	TUE		TUE		SUN		SUN	
WED		MON	WED		WED		MON		MON	
THU		TUE	THU		THU		TUE		TUE	
FRI		WED	FRI		FRI		WED		WED	
SAT		THU	SAT		SAT		THU		THU	
SUN		FRI	SUN		SUN		FRI		FRI	
MON		SAT	MON		MON		SAT		SAT	
TUE		SUN	TUE		TUE		SUN		SUN	
WED		MON	WED		WED		MON		MON	
THU		TUE	THU		THU		TUE		TUE	
FRI		WED	FRI		FRI		WED		WED	
SAT		THU	SAT		SAT		THU		THU	
SUN		FRI	SUN		SUN		FRI		FRI	
MON		SAT	MON		MON		SAT		SAT	
TUE		SUN	TUE		TUE		SUN		SUN	
WED		MON	WED		WED		MON		MON	
THU		TUE	THU		THU		TUE		TUE	
FRI		WED	FRI		FRI		WED		WED	
SAT		THU	SAT		SAT		THU		THU	
SUN		FRI	SUN		SUN		FRI		FRI	
MON		SAT	MON		MON		SAT		SAT	
TUE		SUN	TUE		TUE		SUN		SUN	
WED		MON	WED		WED		MON		MON	
THU		TUE	THU		THU		TUE		TUE	

Sree Siddaganga College of Arts, Science & Commerce for Women, Tumkur-4
ACADEMIC YEAR PLANNER 2014-2015.

II, IV & VI Semesters

EVENTS/PROGRAMS	JANUARY-2015		FEBRUARY-2015		MARCH-2015		APRIL-2015		MAY-2015	
	DAY	EVENTS/PROGRAMS	DAY	EVENTS/PROGRAMS	DAY	EVENTS/PROGRAMS	DAY	EVENTS/PROGRAMS	DAY	EVENTS/PROGRAMS
	THU		SUN		SUN		WED		FRI	May Day
	FRI		MON	Student Council/Meeting	MON	Sociology Forum	THU	Mahaveer Jayanthi	SAT	
	SAT		TUE	Economics Forum	TUE	Koushalya	FRI	Good Friday	SUN	
	SUN		WED	Governing Council Meeting	WED		SAT		MON	
	MON	Student Council/Meeting	THU		THU		SUN		TUE	
	TUE		FRI		FRI	Kannada Forum	MON	Start of Practical Exam	WED	
	WED		SAT	Interclasses Sports Commemoration Start	SAT		TUE		THU	
	THU		SUN		SUN		WED		FRI	
	FRI		MON	Pol.Science Forum	MON		THU		SAT	
	SAT		TUE		TUE	English Forum	FRI		SUN	
	SUN		WED		WED	Sadhana	SAT		MON	
History Forum	MON	Physical Science Forum	THU	Founders Day	THU		SUN		TUE	
	TUE	Commerce Forum	FRI	Spoorthi	FRI		MON	SSES Report	WED	SSES Report
	WED	SSES Report	SAT	Spoorthi	SAT		TUE	Dr. Ambedkar Jayanthi	THU	
SSES Report	THU	Makar Sankranti	SUN	Spoorthi	SUN		WED	End of Classes	FRI	
Leges Re-Opens-Tea	FRI		MON	SSES Report	MON	SSES Report	THU	Vacation from 16.04.2015	SAT	
	SAT		TUE	Mahashivaratri	TUE		FRI		SUN	
HOD's Meeting	SUN		WED		WED		SAT		MON	
	MON	HOD's Meeting	THU	HOD's Meeting	THU	HOD's Meeting	SUN		TUE	
Staff Council/Meeting	TUE	Forum of Life Science	FRI		FRI	Syllabus Completion-III	MON		WED	
	WED	Syllabus Completion-I	SAT	Syllabus Completion-II	SAT	Chandramana Ugadi	TUE	Basava Jayanthi	THU	
Leges Re-Opens-Stu	THU	Test-I (Dept)	SUN		SUN		WED	Theory Exam	FRI	
	FRI		MON	Test-II (Common)	MON	Test-III (Dept)	THU		SAT	
	SAT		TUE	II Test	TUE		FRI		SUN	
Christmas	SUN		WED	II Test	WED		SAT		MON	
	MON	REPUBLIC DAY	THU	II Test	THU		SUN		TUE	
	TUE	Comp..Science Forum	FRI	II Test	FRI		MON		WED	
	WED	Management Forum	SAT		SAT		TUE		THU	
	THU	Commerce Forum	SUN		SUN		WED		FRI	
	FRI		MON		MON		THU		SAT	
	SAT		TUE		TUE		FRI		SUN	

Vacation for II, IV & VI SEM - 16.04.2015.
 Examination Work-MAY To JUNE-2015.
 I, III & V Semester starts from

	DEC	JAN	FEB	MAR	APR	Total
Working Days -	08	25	23	25	10	91
Working Days -	08	25	17	25	10	85

Sree Siddaganga College of Arts, Science & Commerce for Women, Tumkur-2
ACADEMIC YEAR PLANNER 2014-2015
I, III & V Semesters

JUNE-2014		JULY-2014		AUGUST-2014		SEPTEMBER-2014		OCTOBER-2014	
DAY	EVENTS/PROGRAMS	DAY	EVENTS/PROGRAMS	DAY	EVENTS/PROGRAMS	DAY	EVENTS/PROGRAMS	DAY	EVENTS/PROGRAMS
SUN		TUE	Staff Council Meeting	FRI		MON		WED	
MON		WED		SAT		TUE		THU	Ganabhadra Jayanthi
TUE		THU		SUN		WED		FRI	Ayudha Pooja
WED		FRI	Commencement of Classes for II & III Degree	MON		THU	Forum of Management Studies	SAT	Vijaya Dashami
THU		SAT		TUE	Forum of Economics	FRI		SUN	Jakriti
FRI		SUN	Punaschethana	WED		SAT		MON	Commencement Practical Exam
SAT		MON		THU		SUN		TUE	
SUN		TUE	Commencement of Classes for I Semester	FRI	Varanahalakshmi	MON	III Test	WED	Vaalmiki Jayanthi
MON		WED		SAT		TUE	III Test	THU	
TUE		THU		SUN		WED	III Test	FRI	
WED		FRI	Forum of Life Sciences	MON	Forum of Pol.Sci	THU	III Test	SAT	
THU		SAT		TUE		FRI		SUN	
FRI		SUN		WED	Forum of Commerce	SAT	Inter Class Athletic	MON	
SAT		MON	Health Awareness prog / Orientation Prog/Soft Skill Prog	THU		SUN		TUE	
SUN		TUE		FRI	Independence Day	MON		WED	
MON		WED		SAT		TUE	Forum of History	THU	
TUE		THU		SUN		WED		FRI	Staff Council Meeting
WED		FRI	Forum of Physical Science	MON		THU		SAT	End of Classes
THU		SAT		TUE	Forum of English	FRI		SUN	
FRI		SUN		WED	Syllabus Completion II Unit	SAT	Women Empowerment Cell	MON	
SAT		MON	HODS Meeting	THU	State Level UGC Seminar on "W M" & Con and Chall"	SUN		TUE	
SUN		TUE		FRI	II Test / Assignment	MON	Student Council Meeting	WED	Naruka Chaharudashi
MON	College Re Open	WED	Forum of Sociology	SAT		TUE		THU	
TUE		THU	Monthly Report SSES	SUN		WED	Mahalaya Anavayase	FRI	Palpadyami
WED		FRI	CEP Article Submission	MON		THU	CEP Article Submission	SAT	
THU		SAT	Sporthi, NSS, Sports	TUE	Student Council Meeting	FRI	HODS Meeting	SUN	
FRI		SUN		WED		SAT	Monthly Report To SSES	MON	Commencement of Exams
SAT		MON	Syllabus Completion I	THU	Swarnagowd	SUN		TUE	
SUN		TUE	Kamzhan	FRI	Ganesha Chaturthi	MON		WED	
MON		WED	I Test / Assignment	SAT	Monthly Report To SSES	TUE	Syllabus Completion III	THU	Monthly Report To SSES
		THU	Student Council Meet	SUN		FRI			

Working Days
Teaching Days

Jul	Aug	Sept	Oct	Nov	Total
7	26	22	25	12	92
-	24	22	25	12	83

Vacation for I, III & V SEM - 19-10-2014 to 10-11-2014
 Nov To Dec-2014- Examination Work
 Even Semester starts from 29-11-2014.

ACADEMIC YEAR/SEMESTER 2013-2014

II, IV & VI Semesters

JANUARY-2014		FEBRUARY-2014		MARCH-2014		APRIL-2014		MAY-2014		JUNE-2014	
DAY	EVENTS/PROGRAMS	DAY	EVENTS/PROGRAMS	DAY	EVENTS/PROGRAMS	DAY	EVENTS/PROGRAMS	DAY	EVENTS/PROGRAMS	DAY	EVENTS/PROGR
TUE		SAT	HOD's Meeting	TUE	HOD's Meeting	WED	HOD's Meeting	THU	HOD's Meeting	FRI	
WED		SUN		WED		THU		FRI		SAT	
THU		MON	CEP Article Submission	FRI	Student Council	SAT	CEP Article Submission	MON	HOD's Meeting	TUE	
FRI		TUE	Student Council	WED	Founders Day	THU	Student Council	FRI	HOD's Meeting	WED	
SAT		WED	Founders Day	THU	Spoothi	FRI	Syllabus Completion-II	MON	Start of Practical Exam	THU	
SUN		THU	Syllabus Completion-I	FRI	Syllabus Completion-II	SAT	Syllabus Completion-III	TUE	Student Council	FRI	
MON		SAT		SUN		MON		WED	Student Council	SAT	
TUE		SUN		MON		TUE		THU		MON	
WED		MON	Physical Science Forum	TUE	Pol.Science Forum	WED	Physics Industrial Tour	FRI		TUR	
THU		WED	Commerce Forum / Science Exhibition	THU		FRI		SAT		WED	
FRI		THU		FRI		SAT		MON		THU	
SAT		FRI		SUN		MON		TUE		FRI	
SUN		SAT	Comp.Science Forum	MON	Sociology Forum	TUE		WED		SAT	
MON	College re-opens	TUE	Forum of Life Science	WED		THU		THU		MON	
TUE	IQAC Meeting	THU	Management Forum	FRI		FRI		FRI	End of Classes	TUE	
WED		FRI	Governing Council Meeting	SAT		SAT		SAT		WED	
THU	HOD's Meeting	MON		MON		MON		MON	Vacation from 22.5.14	THU	
FRI		TUE	Test-I (Dept)	TUE	Test-II (Common)	TUE		TUE		FRI	
SAT		WED	Economics Forum	WED	History Forum	WED		WED		SAT	
SUN		THU		THU		THU		THU		MON	
MON		FRI	Science Exhibition	FRI	Kannada Forum	FRI		FRI		TUE	
TUE		SAT		SAT		SAT		SAT		WED	
WED		SUN		SUN		SUN		SUN		THU	
THU		MON		MON		MON		MON		FRI	
FRI		TUE		TUE		TUE		TUE		SAT	
SAT		WED		WED		WED		WED		MON	
SUN		THU		THU		THU		THU		TUE	
MON		FRI		FRI		FRI		FRI		WED	
TUE		SAT		SAT		SAT		SAT		THU	
WED		SUN		SUN		SUN		SUN		FRI	
THU		MON		MON		MON		MON		SAT	
FRI		TUE		TUE		TUE		TUE		MON	
SAT		WED		WED		WED		WED		TUE	
SUN		THU		THU		THU		THU		WED	
MON		FRI		FRI		FRI		FRI		THU	
TUE		SAT		SAT		SAT		SAT		FRI	
WED		SUN		SUN		SUN		SUN		SAT	
THU		MON		MON		MON		MON		MON	
FRI		TUE		TUE		TUE		TUE		TUE	
SAT		WED		WED		WED		WED		WED	
SUN		THU		THU		THU		THU		THU	
MON		FRI		FRI		FRI		FRI		FRI	
TUE		SAT		SAT		SAT		SAT		SAT	
WED		SUN		SUN		SUN		SUN		SUN	
THU		MON		MON		MON		MON		MON	
FRI		TUE		TUE		TUE		TUE		TUE	
SAT		WED		WED		WED		WED		WED	
SUN		THU		THU		THU		THU		THU	
MON		FRI		FRI		FRI		FRI		FRI	
TUE		SAT		SAT		SAT		SAT		SAT	
WED		SUN		SUN		SUN		SUN		SUN	
THU		MON		MON		MON		MON		MON	
FRI		TUE		TUE		TUE		TUE		TUE	
SAT		WED		WED		WED		WED		WED	
SUN		THU		THU		THU		THU		THU	
MON		FRI		FRI		FRI		FRI		FRI	
TUE		SAT		SAT		SAT		SAT		SAT	
WED		SUN		SUN		SUN		SUN		SUN	
THU		MON		MON		MON		MON		MON	
FRI		TUE		TUE		TUE		TUE		TUE	
SAT		WED		WED		WED		WED		WED	
SUN		THU		THU		THU		THU		THU	
MON		FRI		FRI		FRI		FRI		FRI	
TUE		SAT		SAT		SAT		SAT		SAT	
WED		SUN		SUN		SUN		SUN		SUN	
THU		MON		MON		MON		MON		MON	
FRI		TUE		TUE		TUE		TUE		TUE	
SAT		WED		WED		WED		WED		WED	
SUN		THU		THU		THU		THU		THU	
MON		FRI		FRI		FRI		FRI		FRI	
TUE		SAT		SAT		SAT		SAT		SAT	
WED		SUN		SUN		SUN		SUN		SUN	
THU		MON		MON		MON		MON		MON	
FRI		TUE		TUE		TUE		TUE		TUE	
SAT		WED		WED		WED		WED		WED	
SUN		THU		THU		THU		THU		THU	
MON		FRI		FRI		FRI		FRI		FRI	
TUE		SAT		SAT		SAT		SAT		SAT	
WED		SUN		SUN		SUN		SUN		SUN	
THU		MON		MON		MON		MON		MON	
FRI		TUE		TUE		TUE		TUE		TUE	
SAT		WED		WED		WED		WED		WED	
SUN		THU		THU		THU		THU		THU	
MON		FRI		FRI		FRI		FRI		FRI	
TUE		SAT		SAT		SAT		SAT		SAT	
WED		SUN		SUN		SUN		SUN		SUN	
THU		MON		MON		MON		MON		MON	
FRI		TUE		TUE		TUE		TUE		TUE	
SAT		WED		WED		WED		WED		WED	
SUN		THU		THU		THU		THU		THU	
MON		FRI		FRI		FRI		FRI		FRI	
TUE		SAT		SAT		SAT		SAT		SAT	
WED		SUN		SUN		SUN		SUN		SUN	
THU		MON		MON		MON		MON		MON	
FRI		TUE		TUE		TUE		TUE		TUE	
SAT		WED		WED		WED		WED		WED	
SUN		THU		THU		THU		THU		THU	
MON		FRI		FRI		FRI		FRI		FRI	
TUE		SAT		SAT		SAT		SAT		SAT	
WED		SUN		SUN		SUN		SUN		SUN	
THU		MON		MON		MON		MON		MON	
FRI		TUE		TUE		TUE		TUE		TUE	
SAT		WED		WED		WED		WED		WED	
SUN		THU		THU		THU		THU		THU	
MON		FRI		FRI		FRI		FRI		FRI	
TUE		SAT		SAT		SAT		SAT		SAT	
WED		SUN		SUN		SUN		SUN		SUN	
THU		MON		MON		MON		MON		MON	
FRI		TUE		TUE		TUE		TUE		TUE	
SAT		WED		WED		WED		WED		WED	
SUN		THU		THU		THU		THU		THU	
MON		FRI		FRI		FRI		FRI		FRI	
TUE		SAT		SAT		SAT		SAT		SAT	
WED		SUN		SUN		SUN		SUN		SUN	
THU		MON		MON		MON		MON		MON	
FRI		TUE		TUE		TUE		TUE		TUE	
SAT		WED		WED		WED		WED		WED	
SUN		THU		THU		THU		THU		THU	
MON		FRI		FRI		FRI		FRI		FRI	
TUE		SAT		SAT		SAT		SAT		SAT	
WED		SUN		SUN		SUN		SUN		SUN	
THU		MON		MON		MON		MON		MON	
FRI		TUE		TUE		TUE		TUE		TUE	
SAT		WED		WED		WED		WED		WED	
SUN		THU		THU		THU		THU		THU	
MON		FRI		FRI		FRI		FRI		FRI	
TUE		SAT		SAT		SAT		SAT		SAT	
WED		SUN		SUN		SUN		SUN		SUN	
THU		MON		MON		MON		MON		MON	
FRI		TUE		TUE		TUE		TUE		TUE	
SAT		WED		WED		WED		WED		WED	
SUN		THU		THU		THU		THU		THU	
MON		FRI		FRI		FRI		FRI		FRI	
TUE		SAT		SAT		SAT		SAT		SAT	
WED		SUN		SUN		SUN		SUN		SUN	
THU		MON		MON		MON		MON		MON	
FRI		TUE		TUE		TUE		TUE		TUE	
SAT		WED		WED		WED		WED		WED	
SUN		THU		THU		THU		THU		THU	
MON		FRI		FRI		FRI		FRI		FRI	
TUE		SAT		SAT		SAT		SAT		SAT	
WED		SUN		SUN		SUN		SUN		SUN	
THU		MON		MON		MON		MON		MON	
FRI		TUE		TUE		TUE		TUE		TUE	
SAT		WED		WED		WED		WED		WED	
SUN		THU		THU		THU		THU		THU	
MON		FRI		FRI	</						

Sree Siddaganga College of Arts, Science & Commerce for Women, Tumkur-2

ACADEMIC YEAR PLANNER 2013-2014

I, III & V Semesters

JULY - 2013			AUG - 2013			SEPT - 2013			OCT - 2013			NOV - 2013		
DATE	DAY	EVENTS/PROGRAMS	DAY	EVENTS/PROGRAMS	DAY	EVENTS/PROGRAMS	DAY	EVENTS/PROGRAMS	DAY	EVENTS/PROGRAMS	DAY	EVENTS/PROGRAMS		
1	MON		THU		TUE		FRI		FRI		FRI			
2	TUE		FRI	Interclass Athletic Meet	WED	Gandhi Jayanthi	SAT		SAT		SAT	Narada Chaturdash		
3	WED	College Re Open II & III Year	SAT	National Conf. on Energy Fuels HOD Meeting	TUE	HOD Meeting	THU	HOD Meeting	THU		MON	Impavali		
4	THU			Forum of Management Studies	WED	Forum of Management Studies	FRI	Forum of Management Studies	FRI	Forum of Management Studies	MON	Balippana		
5	FRI		MON	CEP Article Submission	THU		FRI		SAT		TUE			
6	SAT		TUE		FRI		SAT		MON		WED			
7			WED		SAT		MON		MON		THU			
8	MON		THU	Forum of Economics	MON	Forum of Economics	TUE	Forum of Economics	TUE		FRI			
9	TUE		FRI	Forum of Pol.Sci	MON	Forum of History	WED	Forum of History	WED	Soft Skill Training Prog.	SAT			
10	WED	College Re Open I Year	SAT		TUE	Forum of History	THU		THU		SAT			
1	THU			Health Awareness prog for II Yr Students	WED	Forum of History	FRI		FRI		MON			
2	FRI		MON		THU		SAT		SAT		TUE			
3	SAT	Punachethana	TUE		FRI		FRI		MON	Women Empowerment Cell	WED	End of Classes		
4			WED		SAT		SAT		MON		THU	End of Classes		
5	MON		THU	Independence Day	MON	Women Empowerment Cell	TUE		TUE		FRI	Beginning of Vocation		
6	TUE	Forum of Physical Sciences	FRI		MON		WED		WED		SAT			
7	WED		SAT		TUE		THU		THU		MON			
8	THU				WED		FRI		FRI		MON	Commencement of Exams		
9	FRI	Orientation for Fresh Students	MON		THU		SAT		SAT		WED	Commencement of Exams		
10	SAT		TUE		FRI		FRI		MON		THU	Commencement of Exams		
1			WED		SAT		SAT		MON		THU	Commencement of Exams		
2	MON	Forum of Commerce	THU	Forum of Sociology	MON	Syllabus Completion I Unit	TUE		TUE		FRI			
3	TUE		FRI	Syllabus Completion I Unit	MON	Syllabus Completion II Unit	WED	Syllabus Completion III Unit	SAT		SAT			
4	WED	CEP Article Submission	SAT	Test	TUE	Test	THU	III Test	THU		THU			
5	THU	National workshop on interrelationship of languages with grammar	MON		WED		FRI		FRI		MON			
6	FRI		TUE		THU		SAT	Student Council Meet	TUE	Student Council Meet	TUE			
7	SAT		TUE		FRI		FRI		WED		WED			
8			WED	Student Council Meet	SAT	Student Council Meet	MON	Practical Exam	THU	Practical Exam	THU			
9	MON	Student Council Meet	THU		THU		TUE		FRI		FRI			
10	TUE	Forum of Life Sciences	FRI		MON		WED		SAT		SAT			
1	WED		SAT		THU		THU		THU		THU			

Vacation for I, III & V SEM - 15-11-2013
 Nov To Dec-2013- Examination Work
 Even Semester starts from 06-01-2014

Working Days	Jul 25	Aug 24	Sept 24	Oct 22	Nov 09	Total 104
Teaching Days	25	24	24	17	07	97

Sree Siddhanga College of Arts, Science & Commerce for Women, Tumkur-2
ACADEMIC YEAR PLANNER 2012-13

II, IV & VI Semesters

DECEMBER - 2012		JANUARY-2013		FEBRUARY-2013		MARCH-2013		APRIL-2013		MAY-2013		
DATE	DAY	EVENTS/PROGRAMS	DAY	EVENTS/PROGRAMS	DAY	EVENTS/PROGRAMS	DAY	EVENTS/PROGRAMS	DAY	EVENTS/PROGRAMS	DAY	EVENTS/PROGRAMS
1	SAT		TUE		FRI	HOD's Meeting	MON		WED	May Day		
2	SUN		WED	HOD's Meeting	SAT	Student Council	SUN	HOD's Meeting	TUE	HOD's Meeting	THU	
3	MON		THU	CEP Article Submission	SUN		SUN	CEP Article Submission	WED	Student Council	FRI	
4	TUE		FRI	Student Council Meeting	MON		MON	CEP Article Submission	THU	Student Council	SAT	
5	WED		SAT		TUE		FRI	Student Council	FRI			
6	THU		SUN		WED	Syllabus Completion-I	SAT	Student Council	SAT			
7	FRI		MON		THU	Syllabus Completion-I	SUN	Syllabus Completion-II	SUN			
8	SAT		TUE		FRI	Test-I (Depts)	FRI	Syllabus Completion-II	MON			
9	SUN		WED		SAT		SAT	Test-II (Common)	TUE			
10	MON		THU		SUN		SUN	Mathshivarathra	WED	Syllabus Completion-III	THU	
11	TUE		FRI	Physical Science Forum	MON	Pol Science Forum	MON	Physics Industrial Tour	THU	Chandramangalgaudi	FRI	
12	WED		SAT	Commerce Forum / Science Exhibition	TUE		TUE		FRI			
13	THU		SUN		WED		WED		SAT			
14	FRI		MON	Mahakata Salkeraladi	THU		THU	Career Guidance	SUN	Dr.Kambelkaj Jayanthi	MON	Balavya Jayanthi
15	SAT		TUE	Comp. Science Forum	FRI		FRI		MON	Test-III (Dept)	TUE	
16	SUN		WED	Forum of Life Science	SAT	Sociology Forum	SAT	Koushalya	TUE			
17	MON		THU	ICCKMODE-2013 (17-12-12 to 19-12-12)	SUN		SUN	English Forum	WED			
18	TUE		FRI		MON		MON		THU	Vacation from 18-04-13 to 16-06-13	FRI	
19	WED		SAT	Management Forum	TUE		TUE		FRI	Start of Exam (I,IV,VI)	SUN	
20	THU		SUN		WED		WED		SAT			
21	FRI		MON	IQAC	THU		THU		SUN			
22	SAT		TUE		FRI	Sadhana	MON		MON			
23	SUN		WED		SAT	History Forum	SAT		TUE	Mahaveeti Jayanthi	THU	
24	MON		THU		SUN		SUN		WED			
25	TUE	Christmas	FRI	Id.Mid	MON		MON	Start of Practical Exam	THU			
26	WED		SAT	REPUBLIC DAY	TUE		TUE		FRI			
27	THU		SUN		WED		WED		SAT			
28	FRI	College re-opens	MON	Economics Forum	THU	Kannada Forum	THU		SUN			
29	SAT		TUE		FRI		FRI	Good Friday	MON			
30	SUN		WED	Founders Day	SAT		SAT		MON			
31	MON		THU	Spoorthi	SUN		SUN		TUE			

DEC JAN FEB MAR APR Total
 Working Days - 03 24 24 25 24 100
 Teaching Days - 03 24 24 25 14 90
 May, June, July - Paper setting, Practical Examinations, Invigilation, Evaluation

Sree Siddaganga College of Arts, Science and Commerce for Women, Tumkur-2
II, IV, VI Semester ACADEMIC YEAR PLANNER - 2018-19

Date	December-18		January-19		February-19		March-19		April-19	
	Day	Events / Programs	Day	Events / Programs	Day	Events / Programs	Day	Events / Programs	Day	Events / Programs
1	TUE		FRI	Spoorthi Events	FRI		MON		MON	Starts Practical Exam.
2	WED		SAT	Spoorthi Events	SAT		TUE	Forum of Physical Sci.	TUE	
3	THU		SUN		SUN		MON	Maha Shiva rathri	WED	Spoorthi Valedictory
4	FRI		MON	Forum of English	MON		TUE		THU	Forum of Management Studies
5	SAT		TUE		TUE		WED	Women Empowerment Cell	FRI	
6	SUN		WED	Forum of Economics	WED		THU		SAT	Ugadi
7	MON		THU		THU		FRI		SUN	
8	TUE		FRI		FRI		SAT		MON	
9	WED		SAT	Forum of Computer Sci.	SAT		SUN		TUE	
10	THU		SUN		SUN		MON	Forum of Kannada	WED	
11	FRI		MON		MON		TUE		THU	
12	SAT		TUE	Science Exhibition	TUE	Forum of History	WED		FRI	Staff Council/Meeting
13	SUN		WED		WED		THU		SAT	End of Even Semester
14	MON		THU		THU		FRI		SUN	Ambedkar Jayanti
15	TUE		FRI	Makara Sankranthi	FRI	Forum of Commerce	SAT	III Test	MON	
16	WED		SAT		SAT		SUN	III Test	TUE	
17	MON	College Re Open	THU		SUN		MON	III Test	WED	Mahaveera Jayanthi
18	TUE	Staff Council/Meeting	FRI		MON	Alumni General Body Meeting	TUE		THU	
19	WED	Classes Starts	SAT		TUE	Forum of Pol. Sci.	WED		FRI	Good Friday
20	THU		SUN		WED		THU		SAT	
21	FRI		MON		THU		FRI		SUN	
22	SAT	Forum of Chemistry	TUE		FRI		SAT		MON	
23	SUN		WED		SUN		MON		TUE	
24	MON	Practical classes Starts	THU		MON	HOD's Meeting	TUE		WED	
25	TUE	Christmas	FRI	Forum of Life Science	MON	Staff Council/Meeting	WED		THU	
26	WED		SAT	Republic Day	TUE	Monthly Report SSES	THU		FRI	
27	THU		SUN		WED	Assignment-2/Test-2	SUN	HOD's Meeting	SAT	
28	FRI		MON	HOD's Meeting	THU		FRI	Staff Council/Meeting	SUN	
29	SAT		TUE	Staff Council/Meeting	WED	Monthly Report SSES	MON	Monthly Report SSES	MON	
30	SUN		WED	Monthly Report SSES	THU	Assignment-1/Test-1	TUE		TUE	
31	MON		THU				SUN		SUN	

	Dec	Jan	Feb	Mar	Apr	Total
Working Days	12	25	24	25	11	92
Teachig Days	12	25	22	22	10	85

Vacation for II, IV & VI Sem - 14-04-2019 to 02-06-2019
 Exam. Work starts : 15-4-2019

Career guidance and placement cell



Dr. K C Jayaswamy
Coordinator

In line with the objective of quality enhancement in higher education, career guidance and placement cell of our college is making progressive efforts to improve employability of our students.

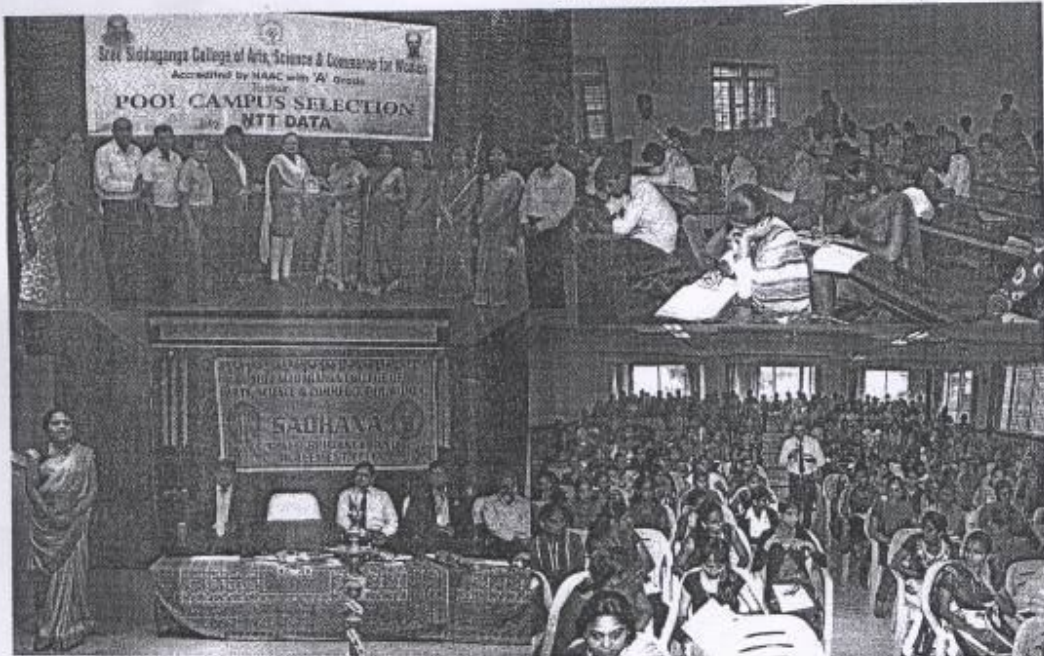
Regular programs are being conducted to provide our students communication and life skills. NAAC peer team which visited our college for re-accreditation has commended the efforts of the cell.

Expert personality development trainers like Mrs. Menaka of Business Fundamental, Dr. Lokesh of leaders academy and Mr. Dinakar reddy of VFT group conducted workshops to train our students in the areas of goal setting, motivation time management and emotional intelligence.

The placement cell conducted pool campus

selection by NTT DATA a Multinational IT company on 3rd April 2014 covering all the colleges of Tumkur University. More than 500 students participated in the job fair. Finally 25 candidates got selected and received offer letters from the company. Our students also participated in the campus recruitment programs conducted by other colleges and got selected for the companies like TCS, Infosys and Wipro.

Career guidance and placement cell is headed by Dr. K.C Jayaswamy and supported by Prof. H.S Mallikarjunappa, Prof. H P.Veerabhadraswamy, Prof G Chidanandamurthy and Prof M Nayana.



ಆಭಿನವಂ - 2014

Career Guidance & Placement Cell

Along with academic performance, employability is the key factor for our Students to ensure better career growth. They require life skills to get entry into openings offered by Companies and governmental departments. In this background the Career guidance and placement cell is making all efforts for training students to acquire employability skills. Continuous training programmes are conducted in this regard.

The placement cell conducted two days' Pool campus selection drive on 9th & 10th March 2016 in association



Dr. K.G. Jayaswamy
Coordinator

with Winvotech Technical Solutions Pvt Ltd., the first of its kind in the history of the college, where in more than 1200 Students from different colleges of Tumkur University participated and 505 Students got selected for different openings by more than 20 Companies. The college places on record words of appreciation to Mr. Dhananjaya Achar, Sharathkumar & Varun Nagelya for wonderful support in this great venture. Prof. V Nalinakshi

"Every technology will alienate you from some part of your life. That is its job. Your job is to notice. First notice the difference. And then, every time, choose."

– **Michael Harris**

Career Guidance & Placement Cell

Dr. K.C. Jayaswamy
Co-ordinator



Education, Employment and Entrepreneurship have become inseparable nowadays. In this background career guidance and placement at the college level gets vital importance. Accordingly, career guidance and placement cell is striving hard to ensure better placement for our students in different companies. As a result our students got selected for companies like TCS, Wipro, Infosys, Tech Mahindra and Vee-Technologies. The cell conducted different training programmes to train the students in the areas communication and life skills. Resource person Dr. Lokesh of Leaders Academy conducted three days personality development workshop on 23rd, 24th and 25th of January 2015 which was useful to our students.

Vee-Technology Limited conducted placement drive in our campus on 11th and 12th February 2015 and selected 38 students for different openings. Our students participated in the campus selection drive conducted by Government First Grade College, Tumkur and TCS. Out of 76 candidates, our students got a lion's share.

Our team consists of Prof. E. Mallikarjunappa, Prof. H.P Veerabhadraswamy, Prof. G. Chidanandamurthy, Prof. Mahesh and Prof. Nayana and the team is getting valuable guidance and support from our principal P. N.Nalinakshi.



Our girls are also employable

Career Guidance

2017-2018

61



Dr. K.C. Jayaswamy
Co-ordinator

Career guidance and placement cell is created to look after the needs of students' employability. Special programmes are conducted round the year for enhancing employability skills of our students. The cell has made arrangements with Whilo India to conduct classes under the title "Corporate Leadership Programme" round the year. This facility is extended to all students right from the first year.

It is our annual practice to conduct job fair extending the facility to all the colleges under Tumkur University. This year also a two day mega job fair was conducted. The event was supported by VM Link Infotech Private Ltd. More than 900 students attended and 305 students got selected for different companies like Just Dial, Endeavour Software, Honda and Kalyani Motors. More than 100 students of our college got selected.

The activities of the cell are supported by committee members Prof.H.S. Mallikarjunappa and Prof. G. Chidananda Murthy. I thank Principal Dr.D.N. Yogeeshwarappa for his whole hearted support in this endeavour.



CAREER GUIDANCE AND PLACEMENT CELL

*At the right time, in the right place*Dr. K.C. Jayaswamy
Co-ordinator

Now a days education and employment go together. Employability has become the Prime objective of education, which needs not only academic excellence but also soft Skills. Our Career guidance and placement cell is working under the banner of Sadhana meaning achievement. Our Team consists of Prof. H.P. Veerabhadraswamy, Prof. G. Chidanandamurthy, Prof. Sridhar, Prof. M. Nayana, who are actively contributing for Student progression and Support.

We have recognized the need for bridging the Gap between academia and industry requirements and continuously engaged in conducting activities to ensure our Students employability acquiring Communicative and life Skills. In this direction supportive programmes are conducted though out the academic year.

We have entered into MOU with 'KARYA' a wing of SAK Industries Pvt. Ltd., for Innovative program of mapping of Student profile on line with various companies and for placement Support.

25 Students form different Streams (Arts, Science, Commerce and Management) came out successfully in recent placement drive conducted by IT major Infosys, Ltd., in our neighbouring College.

We have made necessary preparations to conduct Campus recruitment by TCS Modalities are bring worked out for its successful implantation. We have successfully conducted different works on personality development programmes by Dr. Lokesh of leaders Academy, Dr. Vinodh Kumar of Art of living Bangalore and Mrs. Savitha of Sarva career developers. These programmes have given our Students rich learning experience to acquire employable Skills.

I am highly grateful to our resourceful Principal Dr. Nagabhushana and members of the SSES for their encouragement and support. Finally and very importantly I render my Pranamas at the holy feet of Dr. Sri Sri Shivakumara Maha Swamiji and Sri Sri Siddalinga Maha Swamiji for their blessings.

SOFT SKILL PROGRAMME

Now-a-days soft skills are given much priority than technical.

Under the banner KOUSHALYA - soft skills competitions were conducted for our college students like current affairs, numerical aptitude, logical reasoning under written test competition was held on 21st March 2013, In listening skills competition Infosys Co-founder Nandan Nilekani's talk on 'Ideas for India's Future' was played and listened by students and they answered questions pertaining to the audio and video talk this was held on 22nd March 2013 on the same day Group Discussion was done by students on the topic "Are degrees becoming worthless"? In which Prof. B.S. Manjula, Department of Kannada gave the fair judgement. PPT were made and presented by the student participants on various topics like stress on students, Green House Effect, Helathy Life Style and Women's Challenging role or contribution in corporate world and finally on 3rd day i.e., on 23rd March 2013 MOCK Interview was conducted by the committee members.

Our team consists of young members like Mrs. Shahanaz Fathima, Mrs. Nayana, Miss Shwetha G.Y. and Miss. Aishwarya Nagaraj who actively arranged these competitions for all streams of I, II, III year B.A., B.Sc., B.Com., and BBM degree students, who enthusiastically, confidently participated in all events and bagged many prizes in each event.



Different Committees 2018-2019

File No	Name of the Committee	Designation	Name
1	IQAC	Co-Ordinator	Prof. K.R.Madhav
2	Library Committee	Convener	Sri. Virupakashaiah
3	Sports Committee	Convener	Sri. Vishwananda.N.
4	NSS Advisory Committee	Co-Ordinator	Prof. Prabhukumar.H.B.
5	Admission Committee	Chairman	Principal
6	Alumini Association	Gen Secretary	Smt. Sowmyashree.S.
7	Red Cross Society	Programm Officer	Sri. Kirankumar.H.S.
8	Website Maintenance Committee	Convener	Sri. Mahesh.S.
9	RUSA Committee	Convener	Prof.Thomas Francis
10	Recruitment Committee	Chairman	Dr.D.N.Yogeshwarappa
11	Nitya Dasoha Committee	Convener	Smt. Padmavathi.K.V.
12	Planning Finance and Purchase Committee(UGC)	Co-Ordinator	Dr.K.C.Jayaswamy
13	SSRDC Director	Convener Director	Dr.D.N.Yogeshwarappa
14	Parent-Teachers' association Committee	Convener	Prof. Marappa.B
15	National Festival & Govt functions Committee	Convener	Sri. Vishwananda, Sri. Irfan Ahamed
16	Grievance redressel cell	Convener	Prof. Parashivamurthy
17	Career Guidance & Placement Cell	Convener	Dr.K.C.Jayaswamy
18	Green Audit of its Campus & facilities	Convener	Prof. Amarnath.S.

Different Committees 2018-2019

1	Spoorthi Committee	Convener	Prof. C.V.Shakunthala
2	Soft skill Competition / KOUSHALYA	Convener	Smt. Nayana.M
3	Discipline Committee	Convener	Smt. K.Divya
4	Test Committee	Convener	Prof. N.E.Prathap
5	Women Empowerment Cell	Convener	Smt. R.S.Vijayalatha
6	Proctor System/ Student Council	Convener	Prof. H.S.Mallikarjunappa
7	Student Orientation Committee	Convener	Prof. H.S.Mallikarjunappa
8	Health education & counselling Committee	Convener	Smt. Shahanaz Fathima
9	Students Welfare Committee	Convener	Smt. Somyashree
10	Feedback of lecturers	Convener	Prof. Shivakumar.C.S.
11	Time Table Committee	Convener	Prof. Thomas Francis
12	College Magazine Committee	Editor	Prof. Jayashankar
13	Anti Ragging Cell	Convener	Smt.Shruthi
14	Anti Sexual Harrasement Cell	Convener	Smt.Divya.K.
15	Heritage Club	Convener	Dr.S.Rajesh
16	Forum of Physical Science	Co-Ordinator	Prof.B.Marappa
17	Forum of Life Science	Convener	Prof.G.Chidanandamurthy
18	Housekeeping Committee/ Infrastrucutre	Convener	Sri. Yathiraj
19	Academic Planner for 2017-18	Co-Ordinator	Sri. S.Mahesh
20	Punaschethana Committee	Convener	Prof.G.Chidananda Murthy

ಕನ್ನಡ ಭಾಷೆ

21-8-2018 ರಂದು (ಮಂಗಳವಾರ) ಕನ್ನಡ ವಿಭಾಗವತಿಯಿಂದ 'ಶಾಸನಗಳು ಮತ್ತು ಕನ್ನಡ ಭಾಷೆಯನ್ನು' ಕುರಿತು ವಿಶೇಷ ಲಘುಸಭಾ ಕಾರ್ಯಕ್ರಮವನ್ನು ಆಯೋಜಿಸಲಾಗಿತ್ತು. ಈ ವಿಶೇಷ ಲಘುಸಭಾ ಕಾರ್ಯಕ್ರಮಕ್ಕೆ ತುಮಕೂರು ವಿಶ್ವವಿದ್ಯಾನಿಲಯದ ಗುರುಪುತ್ರ ಕನ್ನಡ ಹಿರಿಯರ ಕೇಂದ್ರದ ಪ್ರಾಧ್ಯಾಪಕರಾಗಿ ಕೆ.ಕೆ.ಎಸ್. ನಿರ್ಮಲಾಕ್ಷ್ಮಿಯವರು, ಡಿ.ವಿ. ಪಾಲಿಟೆಕ್ನಿಕ್‌ನವರು 'ಶಾಸನಗಳು' ಎಂಬ ವಿಷಯವನ್ನು ಕುರಿತು ವಿಶೇಷ ಲಘುಸಭಾ ನಡೆಸಿದರು.

ಕನ್ನಡ ಭಾಷೆಯಲ್ಲಿ ಇಪ್ಪತ್ತು ಸಾವಿರಕ್ಕೂ ಹೆಚ್ಚು ಶಾಸನಗಳು ದೊರೆತಿವೆ. ತಮಿಳುನಾಡು ಬೆಟ್ಟದ ಕನಾಟದಲ್ಲೇ ಹಿಂತೆ ಹೆಚ್ಚು ಶಾಸನಗಳು ದೊರೆತಿರುವುದು ಎಂದು ತಿಳಿಸುತ್ತಾ 'ಶಾಸನ' ಎಂಬ ಪದ 'ಶಾಸ' ಎನ್ನುವ ಧಾತುವಿನಿಂದ ಬಂದಿದೆ. 'ಶಾಸ' ಎಂದರೆ 'ಆಜ್ಞೆ' ಎಂದರ್ಥ. ಶಾಸನಗಳೆಂದರೆ ಆಜ್ಞೆಯಾಗಿ ಬಿಂದುವನ್ನು ಎಸೆದ ಮೇಲೆ ಕೊನೆಗೊಂಡದ್ದು ಎಂದು ತಿಳಿಸುತ್ತಾ, ಶಾಸನಗಳ ಮಹತ್ವವನ್ನು ಕುರಿತು ತಿಳಿಸಿ, ಹಿರಿಯರ ಶಾಸನದಿಂದ ಪ್ರಾರಂಭವಾಗುವ ತಾಳಗುಂಡ ಶಾಸನ, ತಮ್ಮಟಕಲ್ಲು ಶಾಸನ, ಶ್ರೀವಣಬೆಳಗೊಳದ ಶಾಸನ, ಬೆಂಗಳೂರು ಶಾಸನದ ಬಗ್ಗೆ ಸಾಕಷ್ಟು ಮಾಹಿತಿಯನ್ನು ಒದಗಿಸಿ, 'ಪಾಪಂ ಪಾಯಿಂಟು ಪ್ರಸೆಂಟೇಶನ್' ಮೂಲಕ ತಿಳಿಸಿ ವಿನ್ಯಾಸಗಳಿಗೆ ತಿಳಿಸಿದರು.

ಭಾರತದಲ್ಲಿ ಈವರೆಗೆ 1 ಲಕ್ಷ ವಿವಿಧ ಭಾಷೆಯ ಶಾಸನಗಳು ದೊರೆತಿವೆ. ಪ್ರಪಂಚದ ಬೇರೆ ಯಾವ ಭಾಷೆಯಲ್ಲಿಯೂ ಇಷ್ಟೊಂದು ಶಾಸನ ಸಂಪತ್ತಿ ದೊರೆತಿಲ್ಲ. ಭಾರತದ ಚರಿತ್ರೆಯ ಸಮಾಜದ ಏಳಿಗೆಗಳು ಮೂಲಭೂತ ಆಧಾರಗಳಾಗಿವೆ. ಇಷ್ಟೊಂದು ಶಾಸನ ಸಂಪತ್ತು ಭಾರತದಲ್ಲಿರುವುದರಿಂದ ಇವುಗಳನ್ನು ಸಂರಕ್ಷಿಸಿ, ಹಿರಿಯರ ಮಾದರಿಗಳನ್ನು ಅಭ್ಯಾಸಿಸುವುದು ಶಾಸ್ತ್ರೀಯವೆಂದು ತಿಳಿಸಿದರು.

'ಕನ್ನಡ ಭಾಷೆಯನ್ನು ಕುರಿತು ವಿಶೇಷ ಲಘುಸಭಾವನ್ನು ಆಯೋಜಿಸಿ ಮೈಸೂರು ವಿಶ್ವವಿದ್ಯಾನಿಲಯದ ಸಂಪಾದಕರು ಆಗಿರುವ ಸಾ.ಬಿ. ನಂಜುಂಡ ಸ್ವಾಮಿಯವರು ನಡೆಸಿದರು.

ಶ್ರೀ ಸಿದ್ದಗಂಗಾ ಕಲಾ ವಿಜ್ಞಾನ ಮತ್ತು ವಾಣಿಜ್ಯ ಮಹಿಳಾ ಪದವಿ ಕಾಲೇಜು, ತುಮಕೂರು-2.

ರಾಜ್ಯಶಾಸ್ತ್ರ ವಿಭಾಗ - ಒಂದು ದಿನದ ಕಾರ್ಯಾಗಾರದ ವರದಿ

ವಿಷಯ: "ಒಂದು ದೇಶ ಒಂದು ಚುನಾವಣೆ."

ಪ್ರಸುತ ಭಾರತದ ಪ್ರಜಾಪ್ರಭುತ್ವ ವ್ಯವಸ್ಥೆಯಲ್ಲಿ ಭಾವನೆಗಳು ರಾಜಕೀಯದ ಒಂದು ಭಾಗವಾಗಿ ಕಾರ್ಯನಿರ್ವಹಿಸುವ ಅಗತ್ಯವಿದೆ. ಇದನ್ನು ಅರ್ಥಮಾಡಿಕೊಂಡು ಇತ್ತೀಚೆಗೆ 'ಒಂದು ದೇಶ, ಒಂದು ಚುನಾವಣೆ' ಎಂಬ ವಿಷಯದ ಬಗ್ಗೆ ಎಲ್ಲೆಡೆ ವ್ಯಾಪಕ ಚರ್ಚೆಗಳು ಆಗುತ್ತಿವೆ. ಇದರ ಹಿನ್ನೆಲೆಯಲ್ಲಿ ಕರ್ನಾಟಕ ರಾಜ್ಯ ಪದವಿಪೂರ್ವ ಕಾಲೇಜುಗಳ ರಾಜ್ಯಶಾಸ್ತ್ರ ಸಮಘದ ಜಿಲ್ಲಾ ಶಾಲೆ, ಇವರ ಸಹಯೋಗದೊಂದಿಗೆ ರಾಜ್ಯಶಾಸ್ತ್ರ ವಿಭಾಗವು ಶೈಕ್ಷಣಿಕ ಕಾರ್ಯಾಗಾರ ಮತ್ತು ವಿಶೇಷ ಉಪನ್ಯಾಸವನ್ನು ದಿನಾಂಕ.02.08.2018ರ ಬೆಳಿಗ್ಗೆ 10.00ಗಂಟೆಗೆ ಹಮ್ಮಿಕೊಂಡಿತ್ತು. ಇದರ ಮುಖ್ಯ ಅತಿಥಿಗಳು ಮತ್ತು ವಿಶೇಷ ಉಪನ್ಯಾಸಕರಾದ ಡಾ.ಸಂದೀಪ್ ಶಾಸ್ತ್ರಿ ಸಹ ಕುಲಪತಿಗಳು, ಜೈನ್ ವಿಶ್ವವಿದ್ಯಾನಿಲಯ ಹಾಗೂ ಹೆಸರಾಂತ ರಾಜಕೀಯ ವಿಶ್ಲೇಷಕರು ಮಾತನಾಡುತ್ತಾ, 'ಒಂದು ದೇಶ ಒಂದೇ ಚುನಾವಣೆ' ಎಂಬ ವಿಷಯವನ್ನು ಕುರಿತು ಅನುಕೂಲ ಮತ್ತು ಅನಾನುಕೂಲತೆಗಳ ಬಗ್ಗೆ ವಿವರಿಸಿದರು..

ನಂತರ ಜಿಲ್ಲಾ ಪದವಿ ಪೂರ್ವ ಶಿಕ್ಷಣ ಇಲಾಖೆ ಉಪನಿರ್ದೇಶಕಿ ಎಸ್.ನಾಗರತ್ನ ಹಾಗೂ ಶಾಸಕ ಜಿ.ಬಿ.ಜ್ಯೋತಿಗಣೇಶ್ ಸಹ ಸಮಾರಂಭವನ್ನು ಕುರಿತು ಮಾತನಾಡುತ್ತಾ, ಇಂದಿನ ಕಂಪ್ಯೂಟರ್ ಯುಗದಲ್ಲಿ ಹಳೆಯ ವಿಚಾರಗಳು ಕಣ್ಮರೆಯಾಗುತ್ತಿರುವ ದಿನಗಳಲ್ಲಿ ರಾಜ್ಯಶಾಸ್ತ್ರ ವಿಭಾಗದ ಈ ಕಾರ್ಯಕ್ರಮ ನಿಜಕ್ಕೂ ಸ್ವಾಗತಾರ್ಹ. ಸಾರ್ವಜನಿಕರಿಗೆ ಕಾನೂನು ಮತ್ತು ಸಂವಿಧಾನದ ಬಗ್ಗೆ ಆರಿವು ಮೂಡಿಸುವಂತಹ ಕೆಲಸಗಳನ್ನು ಹೆಚ್ಚಿಷ್ಟು ಮಾಡುವಂತೆ ಶುಭ ಕೋರಿದರು.

ಸಂಘದ ಕಾರ್ಯದರ್ಶಿ ಎಂ.ವಿ.ಅಜಯ್‌ಕುಮಾರ್, ಜಿಲ್ಲಾ ರಾಜ್ಯಶಾಸ್ತ್ರ ಸಂಘದ ಗೌರವಾನ್ವಿತ ರಮೇಶ್ ಆರ್.ಬೀಳಗಿ ಮತ್ತು ಕಾಲೇಜಿನ ಪ್ರಾಚಾರ್ಯರಾದ ಡಾ.ಡಿ.ಎನ್.ಯೋಗೀಶ್ವರಪ್ಪ ರಾಜ್ಯಶಾಸ್ತ್ರ ವಿಭಾಗದ ಮುಖ್ಯಸ್ಥರಾದ ಪ್ರೊ.ಪರಶಿವಮೂರ್ತಿ ಮತ್ತು ಉಪನ್ಯಾಸಕಿ ಶ್ರೀಮತಿ ಬಿ.ಎಸ್.ಪಾವನ ಹಾಗೂ ಸುಮಾರು 85 ವಿಶೇಷ ಆಹ್ವಾನಿತರು, ವಿದ್ಯಾರ್ಥಿಗಳು ಸಹ ಉಪಸ್ಥಿತರಿದ್ದರು.



Department Report:

Sree Siddaganga College of Arts, Science and Commerce For
Women Tumkur.

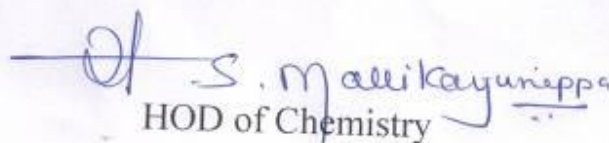
“Special Lecture on Quantum chemistry”

Our department organized special lecture for the students of III and II BSc (PCM, CBZ, CZM and CBBt) and Teachers on 29th Aug. 2018 at 11.00AM to 1.00PM. in the PU college seminar hall.

The programme was begin with invocation song by Kumari. S. Sowmya. Welcome speech by Prof. K Dakshinamurthy. Introduction of the Guest(Resource person) to the gathering by Mr. K. S. Prabhu swamy.

Dr. P.A. Suchethan, Deputy registrar(academic) University Science college Tumkur gave a talk on “Quantum Chemistry” for about one and half hour. He presented the lecturer using power point presentation. His talk inspired our students and teachers. For this programme, Teachers from other colleges(GFGC and SSCASC Tumkur) and about 20 students of Government first grade college, were participated.

Prof. H.S. Mallikarjunappa. gave concluding talk and prof. Jayashankar gave vote of thanks.


HOD of Chemistry

Head of the Department of Chemistry
Sree Siddaganga College of Arts, Science &
Commerce for Women, Tumkur

PRINCIPAL
Sree Siddaganga College of Arts
Science and Commerce for Women
B.H. Road, TUMKUR.



mr
y'
de
ner
e s

Sree Siddaganga College of Arts, Science and Commerce for Women

Department of Computer Science

Guest Lecture Report

Department of computer science organized a guest lecture on topic of “ **Recent trends in Computer Science**” for the students of I Year PMCs and BCA in **Room No 11** on **31st August 2018**.

The speaker for the lecture was **Dr. Zabi Ur Rehaman**, Assistant professor, VVFGC, Tumkur over 10 years of experience.

Principal **Dr.D.N Yogeeshwarappa** delivered a Presidential speech.

Prof Mahesha S HOD introduced the speaker and the topic of lecture to the students.

Smt. Padmavathi K V welcomed all. **Miss Indushree M** delivered the vote of thanks.

The overall program was anchored by **Smt. Nayana Y**.





ಶ್ರೀ ಸಿದ್ದಗಂಗಾ ಕಲಾ ವಿಜ್ಞಾನ ಮತ್ತು ವಾಣಿಜ್ಯ ಮಹಿಳಾ ಕಾಲೇಜು, ತುಮಕೂರು-2.

ಪ್ರಾಣಶಾಸ್ತ್ರ ವಿಭಾಗದಿಂದ ಸೆಮಿನಾರ್

ದಿನಾಂಕ.17.09.2018 ಸೋಮವಾರ

ಸಮಯ: 10.30ಕ್ಕೆ

ಸ್ಥಳ: ಅಕ್ಕಮಹಾದೇವಿ ಸಭಾಂಗಣ

ಕಾರ್ಯಕ್ರಮ

ವಿಷಯ: ಏಜಿಂಗ್ "Aging"

ಮುಖ್ಯ ಅತಿಥಿಗಳು

: ಡಾ.ಕೋಕಿಲಮಣಿ.ಎ.ಎಸ್.
ಉಪನ್ಯಾಸಕರು
ತುಮಕೂರು ವಿಶ್ವವಿದ್ಯಾನಿಲಯ

ಪ್ರಾರ್ಥನೆ

: ಕು.ಪರಾ ತೃ.ಬಿ.ಎಸ್ಸಿ.ಸಿಬಿಜಡ್

ಸ್ವಾಗತ

: ಪ್ರೊ.ಶಿವಕುಮಾರ್.ಸಿ.ಎಸ್.
ಮುಖ್ಯಸ್ಥರು, ಪ್ರಾಣಶಾಸ್ತ್ರ ವಿಭಾಗ

ಅತಿಥಿಗಳ ಪರಿಚಯ

: ಕು.ನಾಗರಕ್ಷಿತ.
ತೃ.ಬಿ.ಎಸ್ಸಿ.ಸಿಬಿಜಡ್.ಎಂ.

ವಿಷಯದ ವಿಸ್ತಾರ

: ಡಾ.ಕೋಕಿಲಮಣಿ.ಎ.ಎಸ್.
ಉಪನ್ಯಾಸಕರು

ಅಧ್ಯಕ್ಷೀಯ ಭಾಷಣ

: ಡಾ.ಡಿ.ಎನ್.ಯೋಗೀಶ್ವರಪ್ಪ
ಪ್ರಾಂಶುಪಾಲರು
ಶ್ರೀ ಸಿದ್ದಗಂಗಾ ಮಹಿಳಾ ಪದವಿ ಕಾಲೇಜು,
ತುಮಕೂರು-2.

ವಂದನಾರ್ಪಣೆ

: ಕು.ದೇವಿಕ. ತೃತೀಯ ಬಿ.ಎಸ್ಸಿ.ಸಿಬಿಜಡ್

ನಿರೂಪಣೆ

: ಕು.ನಯನ.ಎನ್.ಪ್ರಸಾದ್

ಶ್ರೀ ಸಿದ್ದಗಂಗಾ ಮಹಿಳಾ ಪದವಿ ಕಾಲೇಜು,
ತುಮಕೂರು-2

**Sree Siddaganga College of Arts, Science & Commerce for women
Tumakuru-2
DEPARTMENT OF ZOOLOGY
DEPARTMENT REPORT
Seminar on
"AGING"**

Resource person: **Dr. Kokilamani.A.L.**

A seminar was organised by the Department of Zoology, pertaining to the co-curricular activity prescribed by the college guidelines, on the topic AGING. It was due on 17th September 2018 Monday at 10:30 am held at Akkamahadevi Sabhagana, SSCASCW, Tumakuru. The details of the so held programme is as follows.

The programme was started with an invocation song by Ms Farha of final B.Sc, Guests and dignitaries were welcomed by Prof. Shivakumar C S , HOD., Department of Zoology. Introduction of resource person was stated by Ms.Nagarakshita V K., following which Prof. G Chidanandamurthy ,HOD., Department of Botany shared his opinion regarding Seminars organised in the college annually, The programme was presided by Dr. D N Yogeshwarappa Principal, SSCASCW, Tumakuru, who delivered the presidential speech with respect to the held seminar, the seminar was compared by Ms. Nayana N Prasad, Faculty, Department of Zoology.

Dr. Kokilamani A. L. Faculty, Department of Studies & Research, Zoology, Tumkur University, Tumakuru, was called as the chief guest and the resource person for the seminar, she delivered the speech and a power point presentation which has benefited the students immensely.

The power point presentation gave out a detailed explanation of Introduction, Causes, Symptoms & Prevention of Cellular aging at a molecular level which was an elaborate explanation about the whole process of cell aging, i.e., from birth to death of the cell.

The whole presentation was educative, informative to all the students and the faculty members .The gathering consisted of students from all the consecutive years of BSc(CBZ,CZM), Faculty members of Department of Zoology, Department of Microbiology, Department of Bio-technology, & Department of Botany.

The resource person was felicitated by Department of Zoology and the seminar was concluded with a Vote of Thanks by Ms. Devikarani.

Head of the department, 17/9/18

(Prof. Shivakumar C.S.)

Head of the Department of Zoology,
Sree Siddaganga College for Women

ಕಾಗದವೆ ಪೂಜೆಯವಿಲ್ಲದ ಕಾಲದಲ್ಲಿ ನಮ್ಮ ಪೂಜಾರ್ಕರು ಕನಾಟಕದಲ್ಲಿ ತಾಳೆಗರಿ, ಲತ್ತರಬೀರತಡವರು ಭಾಷ್ಯ ಪತ್ರದ ಮೇಲೆ ಕಟ್ಟಿದ ಕಂಠನಂದ ಕೊರೆಯುತ್ತಿದ್ದರು. ಹಿಮಗಳನ್ನೆ ಅಸಿಯೆಗಳೆ ಕನಾಟಕದಲ್ಲಿ ಸಾವಾರು ಕಟ್ಟು ನಿಯತವೆ ಎಂದು ನಂಬುಂಡಷ್ಟವಿಯುವವರು ತಿಳಿಸಿದರು.

ಸಂಪಾದಕರು. ಪ್ರಾಂಶುಪಾಲರು. ಡಾ. ಡಿ.ಎನ್. ಯೋಗೀಶ್ವರಪುರವರು ಮಾತನಾಡಿ, ಕಾಸನ ಸಂಪತ್ತು ರಕ್ಷಿಸುವ ಕಾರ್ಯಾ ಸಾಗು ಮರು ಹಿಡಿನ ಕಾರ್ಯಾ ತುತಾಗ ನಡೆಯನಿದ್ದರೆ ಭವಿಷ್ಯದ ಜನಾಂಗಕ್ಕೆ ಹಿಮಗಳ ಪರಿಚಯವೆ ಇಲ್ಲದಂತಾಗುತ್ತದೆ. ಪದವಿ ಡಾಗಾ ವಿಶ್ವವಿದ್ಯಾಲಯಗಳಲ್ಲಿ ಕೂಡ ಉಪಯುನ ಪಠ್ಯಕ್ರಮದಲ್ಲಿ ಕೆಳವನಿಸಲು ಪ್ರಯತ್ನಿಸಬೇಕು ಎಂದು ಸಲಹೆ ನೀಡಿದರು.

ವಿಶೇಷ ಲಪನ್ಯಾಸ ಕಾರ್ಯಕ್ರಮದಲ್ಲಿ ಕನ್ನಡ ವಿಭಾಗದ ಮುಖ್ಯಸ್ಥ ರಾದ ಪ್ರೊ. ಕೆ. ಸಿ. ಮಂಗಳಾ, ಪ್ರೊ. ಸಿ. ಎ. ಶರೂತಲಾ, ಪ್ರೊ. ಹೆಚ್. ಎ. ವಿಶ್ವಭದ್ರಯ್ಯ, ಸೋಮಶ್ರೀ, ಹೇಮಾದತ್ತ. ಸಿ. ಎಸ್. ಶೈಲತಾ, ಶಿಲಾ, ಲಪಸ್ವಿತರಿದ್ದರು.

Commerce Department

Academic year	Date	Days	Industry	No of students	Staff
2013-14	19 & 20 October 2013	1	1. Mysore paper mill, Bhadravathi. 2. Sugar factory, Bhadravathi. 3. Kemmannu gundi 4. Kallathgiri 5. Jog falls 6. Murudeshwara 7. Idugunji	45	3
		2	1. Side seeing		
2014-15	Nil				
2015-16	26, 27 & 28 September 2015	1	1. Campco Chocolate factory, Puttur. 2. Side seeing	64	2
		2	1. Kuppalli 2. Side seeing		
		3	3. Side seeing		
2016-17		1	1. Campco Chocolate factory, Puttur. 2. Side seeing	102	5
		2	1. Side seeing		
2017-18	Record Nil				

Botany Department

Academic year	Date	Days	Industry	No of students	Staff
2014-15	26 August 2014	1	Devarayana durga Plant collection		
2015-16	2 October 2015	1	Devarayana durga Plant collection		
2016-17	2,3,4,5,6 October 2016	5	Munnar (Plant collection) & Side seeing		
2017-18	8 October 2017	1	Devarayana durga		

Arrangement of Industrial Visit

Chemistry Department

Academic year	Date	Days	Industry	No of students	Staff
2013-14	14 & 15 March 2014	1	1. Vijaya metals, Peenya, Bangalore 2. C-Chem drug industry, Peenya, Bangalore. 3. Mother diary, Yalahanka, Bangalore. 4. Poorna pragna research institute, Bagalur, Bangalore.	47	3+2=5
		2	1. Kivara 2. Side seeing		
2014-15	28 & 29 March 2015	1	1. Mallasandra milk diary, Tumkur. 2. Mycem cement factory, Ammasandra, Tumkur. 3. Gowri chemicals, K.B.Cross, Tumkur.	39	3+1=4
		2	1. Kuppalli 2. Side seeing		
2015-16	18 & 19 March 2016	1	1. Cipet, Mysore. 2. Mysore paints and varnishes limited, Mysore.	48	3+1=4
		2	1. Markera 2. Side seeing		
2016-17			Nil		
2017-18	2 & 3 March 2018	1	1. E-Parisara, Nelamangala, Bangalore. 2. KBD Distillaries pvt ltd, Naelamangala, Bangalore. 3. Mysore sandle soap factory, Yashavanthapura, Bangalore.	38	3+1=4
		2	1. Somanathapura 2. MM Hills 3. Side seeing		

History Department

Academic year	Date	Days	Industry	No of students	Staff
2014-15					
2015-16	March 2016		Educational trip	II-BA	
2016-17	17,18,19, 20 February 2017	4		II-BA	
2017-18					



Sree Siddaganga College of Arts, Science & Commerce for Women

B.H.Road, Tumkur-572102

HEP

Accredited
by
NAAC
A

Department of :

Microbiology

Agriculture and Environmental Microbiology

Year & Combination: V Sem CZM NOV - 2015

Subject: MBP-501

Sl. No.	Reg.No.	Name of the Student		Internal Assessment				
				30 / 45	05	03	10	
				Test	Atten dance	Test	Assign ment	Total
1	13S30606	ANJUM NIKHATH	U/E	18	02	03	03	08
2	13S30607	ANKITHA P	K/E	15	02	03	03	08
3	13S30608	ARPITHA S	K/E	18	02	03	03	08
4	13S30609	CHAITRA B	K/E	29	02	05	03	10
5	13S30610	HEMALATHA A J	K/E	15	02	03	03	08
6	13S30611	JAYASHREE D J	K/E	26	02	05	03	10
7	13S30612	NOOR FAIZA	U/E	08	02	01	03	06
8	13S30613	PRIYANKA SHARMA	H/E	22	02	04	03	09
9	13S30615	SHILPASREE N	K/E	22	02	04	03	09
10	13S30616	SUJATHA M R	K/E	22	02	04	03	09
11	13S30617	SUSHMA RAY C	K/E	24	02	04	03	09
12	13S30618	SWATHI Y L	K/E	23	02	04	03	09
13	13S30619	UMA N	K/E	25	02	05	03	10
14	13S30620	ZEESHAN AFROOZ	H/E	08	02	01	03	06

S. Chidambaram
HEAD OF THE DEPT. OF MICROBIOLOGY
SREE SIDDAGANGA COLLEGE FOR WOMEN



Sree Siddaganga College of Arts, Science & Commerce for Women

B.H.Road, Tumkur-572102

Accredited
by
NAAC
A

Department of :

Microbiology

Microbial physiology and Genetics

Year & Combination: III Sem CZM NOV - 2015

Subject: MBP-301

Sl. No.	Reg.No.	Name of the Student		Internal Assessment				
				30 / 45	02	05	03	10
				Test	Atten dance	Test	Assign ment	Total
1	14S51436	ANKITHA H V	K/E	23	02	04	03	09
2	14S51437	AYESHA SIDDIQA	K/E	17	02	03	03	08
3	14S51438	DEEPIKA M	K/E	12	02	02	03	07
4	14S51439	DIVYA M	K/E	09	02	01	03	06
5	14S51440	NAGASHREE C J	K/E	13	02	02	03	07
6	14S51441	NITHYA H P	K/E	04	02	01	03	06
7	14S51442	RAMYA B	K/E	13	02	02	03	07
8	14S51444	SIMREENA KHANUM	H/E	11	02	02	03	07
9	14S51445	SWARUPARANI N M	K/E	09	02	01	03	06
10	14S51446	SUMA H B	K/E	09	02	01	03	06
11	14S51447	SYEDA SAGEERA	H/E	24	02	04	03	09
12	14S51448	VASUDHA M V	S/E	23	02	04	03	09
13	14S51449	VEENA	K/E	25	02	05	03	10
14	14S51450	ZEHRA KHANUM	H/E	22	02	04	03	09

HEAD OF THE DEPT OF MICROBI

SREE SIDDAGANGA COLLEGE FOR WOMEN

TUMKUR-572 102



Sree Siddaganga College of Arts, Science & Commerce for Women

B.H.Road, Tumkur-572102

Accredited
by
NAAC
A

Department of :

Microbiology

Basic Microbiology & Control

Microorganisms

Year & Combination: I Sem CZM / NOV-2015

Subject: MBP-101

Sl. No.	Reg.No.	Name of the Student		Internal Assessment				
				30 / 45	02	05	03	10
				Test	Attendance	Test	Assignment	Total
1		ASHWINI K	K/E	Ab	Ab	Ab	Ab	Ab
2		BANUPRIYA T S	K/E	18	02	03	03	08
3		BHARGAVI P S	K/E	10	02	02	03	07
4		BIBI AYESHA	U/E	Ab	Ab	Ab	Ab	Ab
5		CHENNAPPAGARI THANUJA	T/E	11	02	02	03	07
6		DEEPTHI K N	K/E	12	02	02	03	07
7		GOWTHAMI K N	K/E	Ab	Ab	Ab	Ab	Ab
8		IRSHAD BANU Z	K/E	18	02	03	03	08
9		JYOTHI P S	K/E	11	02	02	03	07
10		MAMATHA R	K/E	14	02	02	03	07
11		MANJUVANI M	K/E	21	02	04	03	09
12		PRAJNA T H	S/E	16	02	03	03	08
13		SAMREEN	K/E	20	02	03	03	08
14		SAYEEDA ANJUM	H/E	18	02	03	03	08
15		UZMA SULTANA	H/E	11	02	02	03	07
16		VARALAKSHMI K R	K/E	06	02	01	03	06
17		VELLIMANI M	AE/E	22	02	04	03	09

A. Chidambaram
Head of the Department of Botany
Sree Siddaganga College
Sree Siddaganga College for Women
TUMKUR-572102



Sree Siddaganga College of Arts, Science & Commerce for Women
B.H.Road, Tumkur-572102

HEP

Accredited
by
NAAC
A

Department of :

Microbiology

Food and Dairy Microbiology
Subject: MBP-503

Year & Combination: V Sem CZM / NOV - 2015

Sl. No.	Reg.No.	Name of the Student		Internal Assessment				
				30 / 45	05	03	10	
				Test	Atten dance	Test	Assign ment	Total
1	13S30606	ANJUM NIKHATH	U/E	22	02	04	03	09
2	13S30607	ANKITHA P	K/E	23	02	04	03	09
3	13S30608	ARPITHA S	K/E	22	02	04	03	09
4	13S30609	CHAITRA B	K/E	25	02	05	03	10
5	13S30610	HEMALATHA A J	K/E	21	02	04	03	09
6	13S30611	JAYASHREE D J	K/E	26	02	05	03	10
7	13S30612	NOOR FAIZA	U/E	19	02	03	03	08
8	13S30613	PRIYANKA SHARMA	H/E	26	02	05	03	10
9	13S30615	SHILPASREE N	K/E	23	02	04	03	09
10	13S30616	SUJATHA M R	K/E	18	02	03	03	08
11	13S30617	SUSHMA RAY C	K/E	21	02	04	03	09
12	13S30618	SWATHI Y L	K/E	26	02	05	03	10
13	13S30619	UMA N	K/E	25	02	05	03	10
14	13S30620	ZEESHAN AFROOZ	H/E	14	02	02	03	07

S. Chidambaram
HEAD OF THE DEPT. OF MICROBIOLOGY
SREE SIDDAGANGA COLLEGE FOR WOMEN
TUMKUR



**SREE SIDDAGANGA COLLEGE
OF ARTS, SCIENCE & COMMERCE FOR WOMEN, TUMKUR.**

Lecture Plan for the Academic Year.....

Name of the Teacher.....

NAAC A Grade

Class.....

No. of Working Days

Department.....

No. of Hours per Week

Subject.....

* Week days during which Class is held

No. of Teaching Days

Sl.No.	Date	Topic	Remarks
1			
2			
3			
4			
5			
6			
7			
8			
9			
10			
11			
12			
13			
14			
15			
16			
17			
18			
19			
20			

Sl.No.	Date	Topic	Remarks
23			
24			
25			
26			
27			
28			
29			
30			
31			
32			
33			
34			
35			
36			
37			
38			
39			
40			
41			
42			
43			
44			
45			
46			
47			
48			
49			
50			

Sree Siddaganga College of Arts, Science & Commerce for Women,

B.H. Road, Tumkur

Monthly Completions of Syllabus 2018-2019

Department:

Subject:

Paper

July: 01-07-2018 to 31-07-2018

1.

2.

3.

4.

5.

Signature of HOD

NETSIM

NETSIM-A UGC Recognized Career Oriented Programme

NETSIM is a computer based networking course and it is a skill oriented, value added course designed to make the higher education system more relevant with focus on quality and excellence.

Network programming is a key skill that enhances students' "employability". Apart from simulation, NetSim features a separate "Programming" menu to help students build skills in these basic mechanisms of computer networking. This course allows the students to analyze computer networks with skillful depth, power and flexibility.

The following programs are offers under this course.

1. Certificate course
2. Diploma course
3. Advanced diploma course

Currently we are conducting classes and practical for I year PMCs and II year PMCs students by offering certificate and Diploma Course. Each course is of one year duration. After the completion of each course both theory and practical exams will be conducted and certificates will be issued to the students. From 2015 onwards this course is made compulsory for all I year and II year PMCs students.

Programs

- NETSIM inaugural function on 22nd July 2015 for I year and II year PMCs students. This program in inaugurated by **Dr. Prakash B R**, a chief guest and also address the students by giving seminar on topic of "Importance of Networking and Simulation. Principal Prof Nalinakshi V delivered the Presidential speech. IQAC coordinator Dr. Ananda Kumari addresses the students regarding the benefit of the course.
- A guest lecture on "Networking Concept" by **Dr. B R Prakash**, Assistant Professor, Dept of MCA, SAHE on 10th January 2018 at 12 pm
- NETSIM certificate distribution ceremony II and III year PMCs students and inaugural function for fresher's in seminar hall on 28th September 2018. The program is inaugurated by **Prof Y M Reddy**, Retd Principal, SSIT Tumkur, Chief guest Prof **Banuprakash C**, Dept of MCA SIT Tumkur and guest **Prof Husna Sulthana**, GFGC Tumkur

Student Strength

Academic Year	Class & Combination	Student Strength	Total
2015-16	IPMCs	33	89
	II PMCs	46	
	II PME	10	
2016-17	I PMCs	47	74
	II PMCs	27	
2017-18	I PMCs	60	103
	II PMCs	43	
2018-19	I PMCs	60	117
	II PMCs	57	

NETSIM COURSE- PRACTICAL DETAILS

Academic Year	Course Name	Practical Batches	Number of Students
2015-16	Certificate	2B1	19
		2B2	19
		2B3	20
	Certificate	1B1	14
2016-17	Certificate	1B2	15
		1B1	23
	Diploma	1B2	23
		2B1	15
2017-18	Certificate	2B2	11
		1B1	20
		1B2	19
	Diploma	1B3	20
		2B1	21
		2B2	22
2018-19	Certificate	1B1	20
		1B2	21
		1B2	19
	Diploma	2B1	20
		2B2	18
		2B3	20

ಪೂರ್ಣಕಾಲಿಕ ಆಡಳಿತ ಮಂಡಲಿ ಉಪನ್ಯಾಸಕರು (ಪಿ.ಎಚ್ ಸಹಿತ)2018-19

1	ಸೌಮ್ಯಶ್ರೀ ಆರ್	ಕನ್ನಡ ಉಪನ್ಯಾಸಕರು	9482964931	SR - 2018
2	ದಿವ್ಯ ಕೆ	ಇಂಗ್ಲೀಷ್ ಉಪನ್ಯಾಸಕರು	9844146888	Dingalk
3	ಪ್ರಭು ವಿ ಎಸ್	-	9964869970	SR
4	ಜಗದೀಶ್	ಸಮಾಜಶಾಸ್ತ್ರ ಉಪನ್ಯಾಸಕರು	9449368870	SR
5	ಸುಷ್ಮಾ ಕೆ. ಸಿ	ಭೌತಶಾಸ್ತ್ರ ಉಪನ್ಯಾಸಕರು	9972521310	SR
6	ಸ್ನೇಹರಾಜ್ ಕೆ. ಆರ್	-	9448146489	SR
7	ಪ್ರಭುಸ್ವಾಮಿ ಕೆ. ಎಸ್	ರಸಾಯನಶಾಸ್ತ್ರ ಉಪನ್ಯಾಸಕರು	9964664082	SR
8	ಪ್ರಕೃತಿ ಎಸ್	-	7829329829	
9	ಸೌಮ್ಯ ಎಸ್	-	9449021368	SR
10	ಯತಿರಾಜ್ ಎಸ್	ಗಣಿತಶಾಸ್ತ್ರ ಉಪನ್ಯಾಸಕರು	9964504952	SR
11	ಆಶಾರಾಣಿ ಜಿ. ಬಿ	ಸಸ್ಯಶಾಸ್ತ್ರ ಉಪನ್ಯಾಸಕರು	9738706988	
12	ವಿಜಯಲತಾ ಆರ್ ಎಸ್	ಪ್ರಾಣಿಶಾಸ್ತ್ರ ಉಪನ್ಯಾಸಕರು	8892440758	Vijay B
13	ಶಹನಾಜ್ ಫಾತಿಮಾ	-	9739129628	SR
14	ಸ್ಮಿತಾ	-	9741360273	SR
15	ವಿನುತ ಕೆ. ಪಿ	ಜೈವಿಕಶಾಸ್ತ್ರ ಉಪನ್ಯಾಸಕರು	8971483789	SR
16	ಮಹೇಶ್ ಎಸ್	ಗಣಕಶಾಸ್ತ್ರ ಉಪನ್ಯಾಸಕರು	9886044689	SR
17	ಪದ್ಮಾವತಿ ಕೆ. ವಿ	-	9845607238	SR
18	ಇರ್ಪಾನ್ ಅಹಮದ್	-	9886041837	SR
19	ನಯನ ಎಂ	ವಾಣಿಜ್ಯಶಾಸ್ತ್ರ ಉಪನ್ಯಾಸಕರು	9449851495	SR
20	ಹರ್ಷಶ್ರೀ ಎಸ್	-	9632168655	N. Harshathere
21	ರತ್ನಮ್ಮ ವೈ ಎಸ್	-	9916586730	Ruthe YS
22	ಶ್ಯತಿ ಎಂ ಆರ್	-	8277568695	SR
23	ಕಿರಣ್ ಕುಮಾರ್ ಹೆಚ್	-	9741077797	SR
24	ಶಶಿಕಲಾ ಎನ್	-	9845687751	Shashikala n
25	ದಿವ್ಯಶ್ರೀ ಹೆಚ್. ಯು	-	7259973724	SR
26	ರಂಜಿತ ವೈ ವಿ	-	8970702456	SR
27	ಪೂಜಾ ಡಿ	-	8970972865	SR
28	ಶ್ವೇತ ಮಲ್ಲಿಕೆ ಬಿ. ಎಂ	-	9611890338	SR
29	ಅಶ್ವಿನಿ ಹೆಚ್ ಆರ್	ದೈಹಿಕ ಶಿಕ್ಷಣ ನಿರ್ದೇಶಕರು	9743373915	SR

30 ಸಿ.ಪಿ.ಎಸ್.ಎಸ್.ಎಸ್.ಎಸ್.

SR Panayya. B S

Pol Sci

9964851160

SR

SR

SR

ಶ್ರೀ ಸಿದ್ಧಗಂಗಾ ಕಲಾ ವಿಜ್ಞಾನ ಮತ್ತು ವಾಣಿಜ್ಯ ಮಹಿಳಾ ಕಾಲೇಜು ತುಮಕೂರು

ಯು.ಬಿ.ಸಿ. ಬೋಧಕರು 2018-19

ಕ್ರ. ಸಂ	ಹೆಸರು	ವಿಭಾಗ	ದೂರವಾಣಿ ಸಂಖ್ಯೆ	ಸಹಿ
1	ಡಾ ಯೋಗೀಶ್ವರಪ್ಪ ಡಿ.ಎನ್	ಪ್ರಾಂಶುಪಾಲರು	9448680920	
2	ಮಂಗಳ ಕೆ. ಸಿ	ಮುಖ್ಯಸ್ಥರು ಕನ್ನಡ ವಿಭಾಗ	9632940497	Km
3	ಶಕುಂತಲಾ ಸಿ.ವಿ	ಸಹಾಯಕ ಪ್ರಾಧ್ಯಾಪಕರು ಕನ್ನಡ ವಿಭಾಗ	9740584169	CVS
4	ಕೇರುಮಲ್ಲಪ್ಪ ಹೆಚ್. ವಿ	ಮುಖ್ಯಸ್ಥರು ಆಂಗ್ಲಭಾಷೆ ವಿಭಾಗ	9986242836	
5	ಬಸವೇಶ್ ಬಿ	ಸಹ ಪ್ರಾಧ್ಯಾಪಕರು ಆಂಗ್ಲಭಾಷೆ ವಿಭಾಗ	9481145638	
6	ಪ್ರತಾಪ್. ಎನ್. ಇ	-	9886452452	
7	ಡಾ ರಾಜೇಶ್ ಎಸ್	ಮುಖ್ಯಸ್ಥರು ಇತಿಹಾಸ ವಿಭಾಗ	9342334367	
8	ಮೋಹನ್ ಕುಮಾರ್ ಡಿ. ಆರ್	ಮುಖ್ಯಸ್ಥರು ಅರ್ಥಶಾಸ್ತ್ರ ವಿಭಾಗ	9448951109	Mohay.
9	ಮಹಮದ್ ಅಶಾಫುಲ್ಲಾ	ಸಹ ಪ್ರಾಧ್ಯಾಪಕರು ಅರ್ಥಶಾಸ್ತ್ರ ವಿಭಾಗ	8867778516	
10	ದಕ್ಷಿಣಮೂರ್ತಿ. ಹೆಚ್. ಎಂ			
11	ವಿಜಯ ದುಗ್ಗಪ್ಪ	-		
12	ಪರಶಿವಮೂರ್ತಿ	ಮುಖ್ಯಸ್ಥರು ರಾಜ್ಯಶಾಸ್ತ್ರ ವಿಭಾಗ	9448893030	
13	ಡಾ ಆಮೀರ್ ಬಾಬಾ	ಸಹಾಯಕ ಪ್ರಾಧ್ಯಾಪಕರು ರಾಜ್ಯಶಾಸ್ತ್ರ ವಿಭಾಗ		
14	ಪ್ರಭುಕುಮಾರ್ ಹೆಚ್. ಬಿ	ಮುಖ್ಯಸ್ಥರು ಬೌತಶಾಸ್ತ್ರ ವಿಭಾಗ	9113614730	
15	ಥಾಮಸ್ ಫ್ರಾನ್ಸಿಸ್	ಸಹಾಯಕ ಪ್ರಾಧ್ಯಾಪಕರು ಬೌತಶಾಸ್ತ್ರ ವಿಭಾಗ	08116-2252373	
16	ಮಾರಪ್ಪ ಬಿ	-	9481400652	
17	ಮಲ್ಲಿಕಾರ್ಜುನಪ್ಪ ಎಚ್. ಎಸ್	ಮುಖ್ಯಸ್ಥರು ರಸಾಯನಶಾಸ್ತ್ರ ವಿಭಾಗ	9901688827	
18	ಜಯಶಂಕರ್	ಸಹ ಪ್ರಾಧ್ಯಾಪಕರು ರಸಾಯನಶಾಸ್ತ್ರ ವಿಭಾಗ	9448892917	
19	ದಕ್ಷಿಣಮೂರ್ತಿ. ಕೆ	-	9845660989	
20	ಮಂಜುನಾಥ ಪ್ರಸಾದ್. ಕೆ. ಬಿ	ಮುಖ್ಯಸ್ಥರು ಗಣಿತಶಾಸ್ತ್ರ ವಿಭಾಗ	9844415491	
21	ಮಾಧವ್ ಕೆ.ಆರ್	ಸಹ ಪ್ರಾಧ್ಯಾಪಕರು ಗಣಿತಶಾಸ್ತ್ರ ವಿಭಾಗ	9480030400	
22	ಗಿರಿಜಾ ಎಲ್	ಮುಖ್ಯಸ್ಥರು ಪ್ರಾಣಿಶಾಸ್ತ್ರ ವಿಭಾಗ	9448660699	
23	ಚಿದಾನಂದಮೂರ್ತಿ ಬಿ	ಮುಖ್ಯಸ್ಥರು ಸಸ್ಯಶಾಸ್ತ್ರ ವಿಭಾಗ	9964096570	
24	ಡಾ ಜಯಸ್ವಾಮಿ ಕೆ.ಸಿ	ಮುಖ್ಯಸ್ಥರು ವಾಣಿಜ್ಯಶಾಸ್ತ್ರ ವಿಭಾಗ	9945223089	
25	ಚಂದ್ರಪ್ಪ ಸಿ.ಟಿ	ಸಹಾಯಕ ಪ್ರಾಧ್ಯಾಪಕರು ವಾಣಿಜ್ಯಶಾಸ್ತ್ರ ವಿಭಾಗ	9886693998	
26	ಅಮರನಾಥ್ ಎಸ್.	ನಿಯೋಜನೆ ಉಪನ್ಯಾಸಕರು ಸಸ್ಯಶಾಸ್ತ್ರ ವಿಭಾಗ	9448788477	

ಶ್ರೀ ಸಿದ್ಧಗಂಗಾ ಕಲಾ ವಿಜ್ಞಾನ ಮತ್ತು ವಾಣಿಜ್ಯ ಮಹಿಳಾ ಕಾಲೇಜು, ತುಮಕೂರು-2.

ಪುನಶ್ಚೇತನ-2018

- ಪ್ರಾರ್ಥನೆ : ಶ್ರೀಮತಿ ಸೌಮ್ಯ.ಎಸ್.
- ಪ್ರಾಸ್ತಾವಿಕ ಮತ್ತು ಸ್ವಾಗತ : ಜಿ.ಚಿದಾನಂದಮೂರ್ತಿ
- ಉದ್ಘಾಟನೆ ಮತ್ತು ಭಾಷಣ : ಡಾ.ಪರಮಶಿವಮೂರ್ತಿ
ಕುಲಸಚಿವರು, ಮೌಲ್ಯಮಾಪನ ವಿಭಾಗ
ತುಮಕೂರು ವಿಶ್ವವಿದ್ಯಾನಿಲಯ, ತುಮಕೂರು.
- ಸಂಪನ್ಮೂಲ ವ್ಯಕ್ತಿಗಳ ಪರಿಚಯ : ಪ್ರೊ.ಮಾಧವ.
ಗಣಿತಶಾಸ್ತ್ರ ವಿಭಾಗ
- ಅಧ್ಯಕ್ಷೀಯ ನುಡಿ : ಡಾ.ಡಿ.ಎನ್.ಯೋಗೀಶ್ವರಪ್ಪ
ಪ್ರಾಂಶುಪಾಲರು
- ವಂದನಾರ್ಪಣೆ : ಡಾ.ಕೆ.ಸಿ.ಜಯಸ್ವಾಮಿ
ಮುಖ್ಯಸ್ಥರು, ವಾಣಿಜ್ಯಶಾಸ್ತ್ರ ವಿಭಾಗ
- ಟೀ ಸಮಯ**
- ಉಪನ್ಯಾಸ : ಪ್ರೊ.ಕೆ.ಎನ್. ಗಣೇಶಯ್ಯ
Agriculture Scientist
University of Agriculture Sciences
Bangalore.
- ನಿರೂಪಣೆ : ಶ್ರೀಮತಿ ಸೌಮ್ಯಶ್ರೀ.ಆರ್.
ಕನ್ನಡ ವಿಭಾಗ



Sree Siddaganga Education Society (R.)

SRI SIDDAGANGA COLLEGE OF ARTS, SCIENCE AND COMMERCE FOR WOMEN

(NAAC Re-Accredited 'A' Grade)

Gandhinagar, B.H. Road, TUMAKURU-572102



Punaschethana-2018

This is to certify that Smt./Sri

has participated in One day orientation programme 'Punaschethana-2018' for teachers

organized by SSCASOW, Tumakuru on 28th June 2018.

Prof. G. Chidananda Murthy
Convener

Dr. D.N. Yogeeshwarappa
Principal



Sree Siddaganga Education Society (R.)

Sri Siddaganga College of Arts, Science and Commerce for Women

(NAAC Re-Accredited 'A' Grade)

Gandhinagar, B.H. Road, TUMAKURU-572102

Punaschethana-2018

Teacher's Orientation Programme

Inauguration

Dr. D.V. Paramashivamurthy

Registrar (Evaluation)

Tumkur University, Tumakuru

Resource Person

Dr. K.N. Ganeshaiiah

Retd. Professor,

University of Agriculture Sciences, Bengaluru

Presided by

Dr. D.N. Yogeeshwarappa

Principal

SSCASCW, Tumkur

Date : 28-06-2018

Time : 10.00 am

Venue : Akkamahadevi Sabhangana,
SSCASCW, Tumkur

ALL ARE CORDIALLY INVITED

Pr. G. Chidananda Murthy
Convener

and
Staff members

Date: 21-06-2018

To

The coordinator
IQAC
SSCASC for women
Tumkur

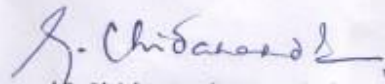
Dear Sir,

SUB: Regarding PUNASCHETANA-2018

With respect to the above subject I would like to inform you that the annual PUNASCHETANA programme is scheduled to 29-06-2018. This is for your kind information.



Convener


(G Chidananda Murthy)

SREE SIDDAGANGA COLLEGE OF ARTS SCIENCE & COMMERCE FOR WOMEN, TUMKUR-2									
EVEN - SEMESTER TIME TABLE --- 2017 MONDAY									
Class	8.30 To 9.25	9.25 To 10.20	10.35 To 11.30	11.30 To 12.25	12.35 To 1-30	1.30 To 2.25	2.40 To 3.35	3.35 To 4.30	
I B.A.HEP				Pol--Sc-05	Kan-1 H-0	Hist-01	I.C -01	Eco-01	
SEP				Pol--Sc-05	Kan-2 S- 23	Soc-03	I.C -02	Eco--02	
HEK				OP-K- 04	Kan-2 U-0	Hist-02	I.C -02	Eco-02	
HEE				OP-E- 07	Kan-2	Hist-02	I.C -02	Eco-02	
II B.A.HEP				Hist-06	Eco-06	Pol.Sci-06	Kan-06 H-	Eng-06	
SEP					Eco-03	Pol.Sci-06	Kan- 03 S-	Eng-03	
HEK				Hist-03	Eco-03	OP-K-03	Kan--03 U-	Eng- 03	
HEE				Hist-03	Eco-03	OP-E-04	Kan- -03	Eng- 03	
III B.AHEP	Pol-Sci-01	Hist-01	Eco-01						
SEP	Pol-Sci-01	Soc-04	Eco-02	Soc-09					
HEK	OP-K-03	Hist-02	Eco-02	OP-K-01					
HEE	OP-E-04	Hist-02	Eco-02	OP-E-02					
I B.Sc PCM		PRACTICAL	PRACTICALS	PRACTICALS	Kan-13 H- 1	Eng- 13	Maths-13	EVS-13	
PMC		"	"	"	Kan-14 S- 23		Eng- 14	EVS-14	
CBZ		"	"	"	Kan-- U- 0	Che-05	Eng-05	EVS-05	
CZM		"	"	"	Kan- 14	Che-05	Eng-14	EVS-14	
CBBt		"	"	"	Kan- 14	Che-05	Eng-14	EVS-14	
II B.Sc PCM		PRACTICAL	PRACTICALS	PRACTICALS	Eng- 16	Maths-16	Kan-16 H-	Chem-16	
PME		"	"	"	Eng- 17	Maths-17	Kan- 17 S-	Ele -23	
PMC		"	"	"	Eng- 17	Maths-17	Kan- 17 S-	CS -17	
CBZ		PRACTICAL	PRACTICALS	PRACTICALS	Eng- 07	Che-07	Kan- 07	Bot-07	
CZM		"	"	"	Eng--17	Che-07	Kan- 17	Mic.bio- 09	
CBBt		PRACTICAL	"	"	Eng- 17	Che-07	Kan- 17	Bot- 07	
III Bsc PCM	Maths-16	Phy- 16	Che-16	Maths-16	PRACTICALS	PRACTICAL	PRACTICALS		
PME	Ele-23	Maths-17	Phy-17	Maths-17	"	"	"		
PMCs	CS -17	Maths-17	Phy-17	Maths-17	"	"	"		
CBZ	Zoo-07	Che-05	Bot- 05	"	"	"	"		
CZM	Zoo- 07	Che-05	Mic -09	"	"	"	"		
CBBt	Bio.tech--08	Che-05	Bot--05	"	"	"	"		
I B.Com C1	18	18	18 Kan H-13	18	EVS-10				
I B.Com C2	19	19	19 Kan U-14	19	EVS-11				
I B.Com C3	20	20	20 Kan S- 23	20	EVS-04				
II B.Com C1				I.C-13	18	18 B.C	18	18	
II B.Com C2				I.C 14	19	19 B.C	19	19	

SREE SIDDAGANGA COLLEGE OF ARTS SCIENCE & COMMERCE FOR WOMEN, TUMKUR-2									
EVEN - SEMESTER TIME TABLE --- 2017 TUESDAY									
Class	8.30 To 9.25	9.25 To 10.20	10.35 To 11.30	11.30 To 12.25	12.35 To 1-30	1.30 To 2.25	2.40 To 3.35	3.35 To 4.30	
I B.A.HEP					I.C -10	Eng-01	Eco-01	Pol.Sci-01	
SEP				Soc-08	I.C -11	Eng-02	Eco-02	Pol.Sci-01	
HEK				OP-K-04	I.C -11	Eng-02	Eco-02		
HEE				OP-E -09	I.C -11	Eng-02	Eco-02		
II B.A.HEP				Pol.Sci-05	Eco-06	Kan-06 H- 05	Hist-06	C.F -06	
SEP				OP-E-05	Eco-03	Kan-03 U-08	Soc-04	C.F -03	
HEK				OP-K-06	Eco-03	Kan-03 S- 23	Hist-03	C.F -03	
HEE				Op- E -03	Eco- 03	Kan-03	Hist-03	C.F -03	
III B.AHEP	Hist-01	Pol.Sci-01	Eco-01	Hist-01					
SEP	Soc-02	Pol.Sci-01	Eco-02	Soc-08					
HEK	Hist-02	OP-K-03	Eco-02	Hist-02	OP-K-02				
HEE	Hist-02	OP-E-04	Eco-02	Hist-02	OP-E-04				
I B.Sc PCM	PRACTICAL	PRACTICALS	PRACTICALS	PRACTICALS	EVS-1	Eng- 13	Phy- 13	Maths-13	Che-13
PMC		"	"	"	PRACTICALS	Phy- 14	Maths-14	CS-14	EVS-14
CBZ		PRACTICALS	"	"	"	Zoo-05	Che-05	Bot-05	EVS-05
CZM		"	"	"	"	Zoo-05	Che-05	Micro-09	EVS-14
CBBt		"	"	"	"	Bio.tech-08	Che-05	Bot-05	EVS-14
II B.Sc PCM	PRACTICAL	PRACTICALS	PRACTICALS	PRACTICALS	Phy-13	Maths-16	Kan-16 H-	Eng-16	
PME	"	"	"	"	Eng-17	Phy-17	Kan-17 U-22		
PMC	"	"	"	"	Eng-17	Phy-17	Kan-17 S- 23		
CBZ	PRACTICAL	PRACTICALS	PRACTICALS	PRACTICALS	Eng-07	Bot-07	Kan- 07	Zoo-07	
CZM	"	"	"	"	Eng-17	Micro-09	Kan- 17	Zoo-07	
CBBt	"	"	"	"	Eng-17	Bot-07	Kan- 07	Bio.Tech-08	
III Bsc PCM	Phy-16	Maths-16	Che-16	Maths-16	PRACTICALS	PRACTICALS	PRACTICALS		
PME	Ele -23	Maths-17	Phy- 17	"	"	"	"		
PMCs	CS -17	Maths-17	Phy-17	"	"	"	"		
CBZ	Che-05	Bot-05	Zoo-07	"	"	"	"		
CZM	Che-05	Micro-09	Zoo-07	"	"	"	"		
CBBt	Che-05	Bot-05	Bio.Tech-08	"	"	"	"		
I B.Com C1	18	18	18 Eng -I	18					
I B.Com C2	19	19	19 Eng -I	19					
I B.Com C3	20 Eng -I	20	20	20					
II B.Com C1				I.C-15	18 Kan H-8	18 Eng -I	18	18	
II B.Com C2					10 Kan U-10	10 Eng -I	10	10	

SREE SIDDAGANGA COLLEGE OF ARTS SCIENCE & COMMERCE FOR WOMEN, TUMKUR-2									
EVEN- SEMESTER TIME TABLE -- 2017									
WEDNESDAY									
Class	8.30 To 9.25	9.25 To 10.20	10.35 To 11.30	11.30 To 12.25	12.35 To 1.30	1.30 To 2.25	2.40 To 3.35	3.35 To 4.30	
I B.A.HEP					Hist-01	Kan-01 H-09	Pol.Sci-01	Eng-01	
SEP					Soc-04	Kan-02 S-23	Pol.Sci-01	Eng-02	
HEK					Hist-02	Kan-02 U-08	OP -K-03	Eng-02	
HEE					Hist-02	Kan-02	OP-E-04	Eng-02	
II B.A.HEP				C.F-04	Pol.Sci-06	Eng-06	Eco-06	Hist-06	
SEP				C.F-11	Pol.Sci-06	Eng-03	Eco-03	Soc-04	
HEK				C.F-11	OP-K-03	Eng-03	Eco-03	Hist-03	
HEE				C.F-11	Op- E -04	Eng-03	Eco-03	Hist-03	
III B.AHEP	Pol.Sci-01	Eco-01	Hist-01	Eco-01					
SEP	Pol.Sci-01	Eco-02	Soc-08	Eco-02					
HEK	OP -K-03	Eco-02	Hist-02	Eco-02					
HEE	OP-E-04	Eco-02	Hist-02	Eco-02	OP-K-07				
I B.Sc PCM		PRACTICAL	PRACTICALS	PRACTICALS	Phy-13	Kan-13 H- 15	Che-13		
PMC					Maths-14	Kan-14 S- 23	Phy- 14	CS -14	
CBZ		PRACTICAL	PRACTICALS	PRACTICALS	Bot-05	Kan-05	Che-05		
CZM					Micro-09	Kan-14 U-08	Che-05		
CBBt					Bot-05	Kan-14	Che-05		
II B.Sc PCM		PRACTICAL	PRACTICALS	EVS -13	Chem - 16	Phy-16	Eng-16		
PME				EVS -15	Ele-23	Eng-17	Maths-17	Phy- 17	
PMC				EVS -15	CS-17	Eng-17	Maths-17	Phy-17	
CBZ		PRACTICALS	PRACTICALS	EVS -10		Eng-07	Zoo-07	Bot-07	
CZM				EVS -15		Eng-17	Zoo-07	Micro-09	
CBBt				EVS -15		Eng-17	Bio tech-08	Bot-07	
III Bsc PCM	Maths-16	Che-16	Phy-16	Maths-16	PRACTICAL	PRACTICALS	PRACTICALS		
PME	Maths-17	Phy-17	Maths-17	Ele-23					
PMCs	Maths-17	Phy-17	Maths-17	CS -17					
CBZ	Bot-05	Zoo-07	Che-05						
CZM	Micro- 09	Zoo-07	Che-05						
CBBt	Bot-05	Biotech-08	Che-05						
I B.Com C1	18 Eng-I	18	18 Kan	18	EVS-11				
I B.Com C2	19 Eng-I	19	19 Kan U- 14	19		EVS 11			
I B.Com C3	20 Eng-I	20	20 Kan S-23	20		EVS-12			
II B.Com C1					18	18	18 Kan H-3	18	
II B.Com C2					19	19	19 Kan U-22	19	

SREE SIDDAGANGA COLLEGE OF ARTS SCIENCE & COMMERCE FOR WOMEN,									
EVEN- SEMESTER TIME TABLE -- 2017									
THURSDAY									
Class	8.30 To 9.25	9.25 To 10.20	10.35 To 11.30	11.30 To 12.25	12.35 To 1.30	1.30 To 2.25	2.40 To 3.35	3.35 to 4.30	
I B.A.HEP				Pol.Sci--01	His-01	Eco-01	Eng-01	Kan-01	
SEP				Pol.Sci-01		Eco-02	Eng-02	Kan-02 H- 9	
HEK				Op-K-08	His-02	Eco-02	Eng-02	Kan-02 U- 22	
HEE				Op-E-07	His-02	Eco-02	Eng-02	Kan-02 S- 23	
II B.A.HEP				Eco-06	Eng-06	Kan-06 H-09	His-06	C.F-02	
SEP				Eco-10	Eng-03	Kan-03 U-08	Soc-04	C.F-03	
HEK				Eco-10	Eng-03	Kan-03 S- 23	His-03	C.F-03	
HEE				Eco-10	Eng-03	Kan-03 U-08	His-03	C.F-03	
III B.AHEP	Eco-01	Pol.Sci-01	His-01		Pol.Sci-04				
SEP	Eco-02	Pol.Sci-01	Soc-04	Soc-02	Pol.Sci- 04				
HEK	Eco-02	OP-K-03	His-02	OP-K-03					
HEE	Eco-02	OP-E-04	His-02	OP-E-04					
I B.Sc PCM	PRACTICAL	PRACTICAL	PRACTICALS	EVS-13	Phy- 13	Eng-13	Maths-13	Kan-13 H-15	
PMC					Maths-14	Phy- 14	Eng-14	Kan-14 S- 23	
CBZ		PRACTICAL	PRACTICALS	PRACTICALS	Chem -05	Zoo-05	Eng-05	Kan-05 U-8	
CZM					Chem -05	Zoo-05	Eng-14	Kan- 05	
CBBt					Chem -05	Biotech-08	Eng-14	Kan- 05	
II B.Sc PCM		PRACTICAL	PRACTICALS	EVS -12	Eng-16	Kan-16 H-15	Chem - 16	Maths-16	
PME				PRACTICALS	Ele- 23	Kan-17 U- 22	Maths-17	EVS -17	
PMC					CS -17	Kan-17 S- 23	Maths-17	EVS -17	
CBZ		PRACTICAL	PRACTICALS		Bot-07	Kan-07	Chem - 07	EVS -07	
CZM					Micro-09	Kan-17	Chem - 07	EVS -17	
CBBt					Bot-07	Kan-17	Chem - 07	EVS -17	
III Bsc PCM	Phy-16	Maths-16	Chem -16	Maths-16	PRACTICAL	PRACTICALS	PRACTICALS		
PME	Maths-17	Ele-23	Phy-17	Maths-17					
PMCs	Maths-17	C.S-17	Phy-17	Maths-17					
CBZ	Bot-05	Zoo-07	Che-05						
CZM	Micro-09	Zoo-07	Che-05						
CBBt	Bot-05	Biotech-08	Che-05						
I B.Com C1	18	18	18 -Eng -I	18					
I B.Com C2	19	19	19 -Eng -I	19					
I B.Com C3	20	20	20 Eng -I	20					

SREE SIDDAGANGA COLLEGE OF ARTS SCIENCE & COMMERCE FOR WOMEN, TUMKUR-2								
EVEN - SEMESTER TIME TABLE -- 2017								
FRIDAY								
Class	8.30 To 9.25	9.25 To 10.20	10.35 To 11.30	11.30 To 12.25	12.35 To 1-30	1.30 To 2.25	2.40 To 3.35	3.35 To 4.30
I B.A.HEP					Eng-01	His-01	Eco-01	Kan-01
SEP					Eng-02	Soc-05	Eco-02	Kan-02 U- 15
HEK					Eng-02	His-02	Eco-02	Kan-02 U- 22
HEE					Eng-02	His-02	Eco-02	Kan-02 S- 23
II B.A.HEP				Eng-06	Eco-06	Pol.Sci-06	CF -06	
SEP				Eng-10	Eco-03	Pol.Sci-06	CF-03	Soc-04
HEK				Eng-10	Eco-03	OP -K-11	CF 03	
HEE				Eng-10	Eco-03	Op E-10	CF 03	
III B.AHEP	Hist-01	Eco-01	Pol.Sci-01	Hist- 01	Pol.Sci-04			
SEP	Soc-04	Eco-02	Pol.Sci-01	Soc-04	Pol.Sci-04			
HEK	Hist-02	Eco-02	OPK-03	Hist-02				
HEE	Hist-02	Eco-02	OPK-04	Hist-02				
I B.Sc PCM		PRACTICALS	PRACTICALS	PRACTICALS	Phy-13	Eng-13	Che-13	Kan-13 H-15
PMC	PRACTICAL	"	"	"	Eng-14	Phy- 14	CS -14	Kan-14 S- 23
CBZ	"	"	"	"	Eng-05	Bot-05	Zoo-05	Kan-05 U-8
CZM	"	"	"	"	Eng-14	Micro-09	Zoo-05	Kan-05
CBBt	"	"	"	"	Eng-14	Bot-05	Biotech-08	Kan-05
II B.Sc PCM		PRACTICALS	PRACTICALS	PRACTICALS	Phy- -16	Maths-16	Che-16	EVS -16
PME	PRACTICAL	"	"	"	Maths-17	Phy-17	Eng - 17	EVS -17
PMC	"	"	"	"	Maths-17	Phy-17	Eng - 17	EVS 17
CBZ	PRACTICAL	"	"	"	Che-07	Zoo-07	Eng - 07	EVS 07
CZM	"	"	"	"	Che-07	Zoo-07	Eng - 17	EVS -17
CBBt	"	"	"	"	Che-07	Biotech-08	Eng - 17	EVS-17
III Bsc PCM		Maths-16	Che-16	Phy- -16	PRACTICALS	PRACTICALS	PRACTICALS	
PME	Ele-23	Maths-17	Phy- -17	Maths-17	"	"	"	
PMCs	CS -17	Maths-17	Phy- -17	Maths-17	"	"	"	
CBZ	Zoo-07	Che-05	Bot-05	"	"	"	"	
CZM	Zoo-07	Che-05	Micro-09	"	"	"	"	
CBBt	Biotech-08	Che-05	Bot-05	"	"	"	"	
I B.Com C1	18	18 Kan H15	18	18				
I B.Com C2	19	19 Kan U-14	19	19				
I B.Com C3	20	20 Kan S-23	20	20				
II B.Com C1			IC- 14	IC-13	18	18 Kan H-3	18	18 Eng-I
II B.Com C2					19	19 Kan U-1	19	19 Eng-I

SREE SIDDAGANGA COLLEGE OF ARTS SCIENCE & COMMERCE FOR WOMEN, TUMKUR-2								
EVEN - SEMESTER TIME TABLE -- 2017								
SATURDAY								
Class	8.30 To 9.25	9.25 To 10.20	10.35 To 11.30	11.30 To 12.25	12.35 To 1-30	1.30 To 2.25	2.40 To 3.35	3.35 To 4.30
I B.A.HEP					Hist-01	Eco-01	Pol.Sci-01	
SEP					Soc- 05	Eco-02	Pol.Sci-01	
HEK					Hist-02	Eco-02	OP-K-03	
HEE					Hist-02	Eco-02	OP-E-04	
II B.A.HEP					Pol.Sci-04	Kan-06	H-09His-06	
SEP					Pol.Sci-04	Kan-03	U- 0 Soc- 02	
HEK					OP-K-03	Kan-03	S-23 His-03	
HEE					Op- E -06	Kan-03	His-03	
III B.AHEP	Eco-01	Hist-01	Pol.Sci-01	Eco-01				
SEP	Eco-02	Soc-03	Pol.Sci-01	Eco-02				
HEK	Eco-02	Hist-02	OP-K-03	Eco-02				
HEE	Eco-02	Hist-02	OP-E-04	Eco-02				
I B.Sc PCM		PRACTICAL	PRACTICALS	PRACTICALS	Che-13	Maths-13		
PMC		"	"	"	Maths-14	CS -14	Eng-14	
CBZ		"	"	"	Zoo-05	Bot-05	Eng-05	
CZM	PRACTICAL	"	"	Micro-09	Zoo-05		Eng-14	
CBBt	"	"	"	"	Biotech-08	Bot- 05	Eng-14	
II B.Sc PCM	PRACTICAL	PRACTICAL	PRACTICALS	Maths-16	Phy-16	Kan-16 H-15	EVS -16	
PME	"	"	"	Phy-17	Maths-17	Kan-17 U- 22	Ele-23	EVS -17
PMC	"	"	"	Phy-17	Maths-17	Kan-17 S-23	CS -17	EVS -17
CBZ		PRACTICAL	PRACTICALS	PRACTICALS	Chem-07	Kan-07	Zoo-07	EVS -07
CZM		"	"	"	Chem-07	Kan-17	Zoo-07	EVS -17
CBBt		"	"	"	Chem-07	Kan- 17	Bio.Tech-08	EVS -17
III Bsc PCM	Che-16	Phy-16	Maths-16		PRACTICALS	PRACTICALS	PRACTICALS	
PME	Maths-17	Ele-23	Phy-17		"	"	"	
PMCs	Maths-17	CS -17	Phy-17		"	"	"	
CBZ	Che-05	Zoo-07	Bot-05		"	"	"	
CZM	Che-05	Zoo-07	Micro-09		"	"	"	
CBBt	Che-05	Biotech-08	Bot-05		"	"	"	
I B.Com C1	18	18 Eng-I	18 Kan	18				
I B.Com C2	19	19 Eng -I	19 Kan U-15H-	19				
I B.Com C3	20	20 Eng -I	20 Kan S-23	20				
II B.Com C1					18	18	18	18 B.C
II B.Com C2					19	19	19	19 B.C

