



NETSIM COURSE (2019-2020)

NETSIM is a computer based networking course and it is a skill oriented, value added course designed to make the higher education system more relevant with focus on quality and excellence.

Network programming is a key skill that enhances student's "employability". Apart from simulation, NetSim features a separate "Programming" menu to help students build skills in these basic mechanisms of computer networking. This course allows the students to analyze computer networks with skillful depth, power and flexibility.

The following programs are offers under this course.

1. Certificate course
2. Diploma course
3. Advanced diploma course

Currently we are conducting classes and practical for I year PMCs and II year PMCs students by offering certificate and Diploma Course. Each course is of one year duration. After the completion of each course both theory and practical exams will be conducted and certificates will be issued to the students. From 2015 onwards this course is made compulsory for all I year and II year PMCs students.

NETSIM CERTIFICATE COURSE

Syllabus-Theory

2hrs/week

TotalHrs:35

Unit1:Introduction to Networks

4hrs

Definition ,criteria's, advantages and disadvantages, network elements models, devices , switching and cabling , network components-Hub, switch, bridge, NIC, Modems .

Unit2:Media and Topologies

6hrs

Topology and access methods -bus , star , ring , mesh , their advantages and disadvantages, logical and physical topology

Transmission Types- broadcast and point-point

Communication types-half duplex , full duplex

Network services- Connection oriented and connection less oriented, comparison between them. Types of network- LAN, WAN, MAN

Unit3:Cable and media connectors

5hrs

Cable types-CAT3 ,CAT5, crimping , twisted pair (Shielded and un shielded),co-axial cable media connectors – RJ-11, RJ-45, USB, F-Type.

UNIT4:Protocols and standards**8hrs**

Layered architecture, OSI and TCP/IP model, MAC addressing, IP addressing-IP ranges and their subnet masks, functions of protocols, standards.

UNIT5:LAN Protocols**10hrs**

Ethernet, token ring ,token bus, error and flow control.

Unit6:LAN devices**2hrs**

Hub, switch, repeater, bridge, concentrator.

Syllabus-practical**Duration:02hrs****1lab/week**

1. Introduction to networking hardware
2. To crimp and test straight cable
3. Demonstration of straight cable
4. To crimp and test cross over cable
5. Demonstration of cross over cable
6. Introduction and protocols to fix a NIC(network interface card)
7. Configuring the IP address
8. Demonstration
9. Setup domain/workgroup
10. LAN setup

Introduction to Networking Hardware:**Lab1****Objective: To identify different components used in networks.**

Procedure: Different components available in a network are as follows:

1. **NIC (Network Interface Card):** it serves as a interface between computer and the network cable for sending and receiving data.
2. **RJ45 port:** this is a connector on your computer or a networking device that is used to connect the network cable.
3. **RJ11 connector:** it is a standard modular telephone connector and used for connecting four wires.
4. **RJ45 connector:** it is a standard network cable connector and used for connecting eight wires.
5. **Hub:** it is a central connection point for network cables that connect to computers or devices on a network. Here signal is broadcasted across the network, hence working is delayed.
6. **Switch:** a network switch is a small hardware device that joins multiple computers together within one Local Area Network(LAN). When two devices communicate through a switch, it sends signal directly from one port to other port, instead of transmitting to all ports, like on a hub.

Different tools:

1. **Modular crimping tool:** it is used to fix the wires into the RJ45 connector.
2. **Sleeve remover(CAT5cable):**it is used to remove protective cover or outer layer of a network cable.
3. **RJ45cable:**these cables are used to connect RJ45 connector.
4. **Network cable tester:** It is used to test the crimped RJ45 cables.

Network Cable:

Lab2

This is used to connect two network device for communication. There are two types of cable crimping. Each cable contains its own color code.

1. Straight cable
2. Cross cable

Straight cable: this cable is used to connect two different devices such as system-hub or system-switch or vice versa.

Cross over cable: this cable is used to connect two similar devices such as system-system or hub-hub or switch-switch.

1. **To crimp and test straight cable:**

Objective: to crimp, test and connect PCs with a straight cable.

Apparatus: RJ45 cables (straight cables), crimping tool, network cable tester and sleeve remover.

Procedure:

- **Cutting:** this process involves great concentration. One should make sure that the sleeve of the network cable should be peeled off. Care should be taken for not damaging the wires inside. The length of the cable that should be peeled off should match the length of RJ45 jack.
- **Crimping:** using the crimping tool, both ends of the RJ45 cable need to be crimped. Make sure that the cables are fixed inside the jack perfectly and then crimped. At the time of crimping one should be conscious of IEEE standard color code format.

Color code:

Left	Right
Orange white	Orange white
Orange	Orange
Green white	Green white
Blue	Blue
Blue white	Blue white
Green	Green
Brown white	Brown white
Brown	Brown

- **Testing:** the crimped RJ45 cables have to be checked using the testing tool. Insert both the ends into the port available in the tester and turn on the power button. To ensure that the straight cable is properly crimped the LEDs on the tester should glow. The pattern in which the LEDs need to glow is, when LED1 of one end of the cable glows, LED1 of the other end should glow at the same time. Similarly LED2, LED3, LED4, LED5, LED6, LED7, LED8 of both the ends should glow simultaneously. This indicates that the cables are perfect for use.
- **Result:** the given straight cables are crimped, tested and connected successfully.

Lab3

To crimp and test cross over cable:

Objective: to crimp, test and connect PCs with a cross cable.

Apparatus: RJ45 cables (cross cables), crimping tool, network cable tester and sleeve remover.

Procedure:

- **Cutting:** this process involves great concentration. One should make sure that the sleeve of the network should be peeled off. Care should be taken for not damaging the wires inside. The length of the cable that should be peeled off should match the length of RJ45 jack.
- **Crimping:** using the crimping tool, both ends of the RJ45 cable needs to be crimped. Make sure that the cables are fixed inside the jack perfectly and then crimped. At the time of crimping one should be conscious of IEEE standard color code format.

Color code:

Color code		LED's	
Left	Right	Left	Right
Orange white	Green white	1	3
Orange	Green	2	6
Green white	Orange white	3	1
Blue	Blue	4	4
Blue white	Blue white	5	5
Green	Orange	6	2
Brown white	Brown white	7	7
Brown	brown	8	8

- **Testing:** the crimped RJ45 cables have to be checked using the testing tool. Insert both the ends into the port available in the tester and turn on the power button. To ensure that the cross cable is properly crimped the LEDs on the tester should glow. The pattern in which the LEDs need to glow is, LED1 -> LED3, LED2 -> LED6, LED3 -> LED1, LED4 -> LED4, LED5 -> LED5, LED6 -> LED2, LED7, LED8 -> LED8 of left and right respectively.
- **Result:** the given cross cables are crimped, tested and connected successfully.

Lab4

Introduction and procedure to fix a NIC (network Interface Card)

Objective: to understand what is NIC and how to install the hardware onto a system.

Procedure: NIC is also called as network card or network adopter. It is a piece of computer

hardware designed to allow the computers to communicate over a computer network. It allows the users to connect to each other either through wired or wireless network.

A network card typically has a twisted pair port where a network cable is connected and few LEDs to inform the user of whether the network is active.

How to fix a NIC onto a system?

Before installing the NIC, unplug the system to avoid an electrical shock hazard. A NIC is easy to install. The only consideration for installation are that you have an available slot and that the NIC is designed for the slot type you have. Most systems use a PCI(peripheral Component Interface) slot for a NIC.

1. Power of the system
2. Remove the cover of the cabinet of the CPU
3. Remove the cover plate adjacent to the slot for your NIC to be fixed.
4. Align the NIC over the slot with the jack facing the outside of the system
5. Set the NIC into the slot and press down firmly
6. Secure the NIC mounting bracket to the case with a screw
7. Replace the cover
8. Plug-in the system

This completes the hardware installation.

Note: if the NIC device is not detected by your operating system then install the corresponding software otherwise no need of installation.

Lab5

Configuring the IP address: To install and configure the TCP/IP network protocol on windows 2000, windows XP and windows server 2003.

1. Click **start->settings->control panel**
2. In control panel double click network connections.
3. Double click Local Area Connection(LAN)icon and click properties.
4. Select internet protocol(TCP/IP)and click properties.
5. Select using the following IP address. Check with your network administrator to determine the correct setting for this tab. If your PC does not automatically obtain IP and DNS address, do the following,
 - Enter IP address of your PC(ex:192.168.1.3)
 - The subnet mask is automatically taken(ex: 255.255.255.0)
 - Enter the correct “default gateway/preferred DNS server/alternate DNS server(i.e, these are dependent on the type of internet connection)”.
6. Click OK on all LAN properties window.

Setup domain or work group:

Objective: to add system on to a domain/workgroup

Procedure:

1. **Domain:** This is a specific name given to a LAN that includes one or more domain controllers.

- The advantage is that you have a dedicated server to log or track all users and shares the required file or folders.
 - The disadvantage is that cost and maintenance required to keep this configuration or settings.
 - All the systems in a domain can be forced to follow a set of rules.
2. **Work group:** this has no dedicated server to track users, its all done through each client machine on the LAN. Work group includes shared objects and user logons.

Steps:

- Go the **start ->right click on my computer and select properties.**
 - Select the tab computer name in the system property window.
→Click on change button.
3. Under the member of click on either domain or workgroup and then click on OK button.
 4. A welcome window appears which specifies the workgroup name click on OK button.
 5. Restart the system. View work groups:
 - Ping each system from both the workgroups.
 - Also access files and folders from system of the same work group.
 - Network places: this is where we can find all the systems which are sharing files or folders across the network.
 - Go to start ->My network places to view all the systems in the network.

Certificate Course

SI No	Name	SI No	Name
1	AFREEN TAJ	36	NIKHITHA K
2	AISHWARYA SETTY	37	POOJASHREE
3	AMREEN ZEHRA	38	RAKSHITHA A
4	ANU R	39	RAKSHITHA H M
5	ANUSHA H K	40	RANJITHA T K
6	BHAVANA A	41	REKHA L
7	BHUMIKA JAIN P	42	S DIVYASREE
8	CHANDANA A R	43	SAHANA M
9	CHANDANA S	44	SAISREE H R
10	CHANDANA K M	45	SANIYA FATHIMA
11	CHANDRAKALA S	46	SHILPASHREE S R
12	DEEPIKA D	47	SHUBHA P
13	DEEPTHI B S	48	SINDHU G B
14	GAGANA A U	49	SNEHA H S
15	HAMSAVEENA	50	SUSHMA R
16	KAVYA M	51	SUPRIYA N N
17	KAVYA M	52	TAFSEER FATHIMA
18	KAVYA T R	53	TANUSHREE C V
19	KEERTHANA D M	54	TEJASHWINI
20	KEERTHI SHETTY V N	55	THANUJAKSHI V S
21	KOMALA	56	THEJASWINI M S
22	KRUPA H R	57	VATHSALA YADAV D G
23	LAKSHMI H	58	VIDYA K C
24	LAVANYA V R	59	VIDYASHREE T R
25	MAMATHA C M	60	VIDYASHREE Y H
26	MANASA G N		
27	MEGHANA M S		
28	MEGHANA G S		
29	MONIKA H J		
30	MONISHA N S		
31	N PUSHPA		
32	N R TEJASWINI		
33	N SHAHANA		
34	NAMRATHA J		
35	NAYANA D K		

Time Table :

DAY	TIME
Monday	10:30-12:30
Wednesday	10:30-12:30
Friday	10:30-12:30

NETSIM DIPLOMA COURSE THEORY SYLLABUS

Time: 02hours/week

Chapter1:Wireless Communication

06hr

Characteristics, Wireless Communication, History, Wireless Lan, WLAN Architecture, CSMA/CD, Wireless Networking Security, WI-FI, Wireless Standard IEEE 802.11, How it works, Wireless Networking Standards, Comparison of Wireless Lan 802.11 Standards.

Chapter 2: Fast Ethernet, Gigabit Ethernet and VLAN

06hr

Fast Ethernet, What is Fast Ethernet, Overview, Advantages, Technical overview, Migration, Gigabit Ethernet, GMII(Gigabit Medium Independent Interface),Physical MediaTypes,1000 Base ,VLAN, VLAN's Frame Processing, Types of VLAN,VLAN Connections and Limitations.

Chapter 3: Internet Access technologies

06hr

Internet, reasons, why people use the internet, Internet Access, Introduction, Common Internet Access, Cable Modem , XDSL, ADSL, installation, Satellite Internet Access, Plain Old Telephone Service, Public switched telephone network, Wireless Internet Access.

Chapter 4: Wide Area Network (WAN) Protocol **06hr** WAN, Introduction to WAN,WAN technologies and OSI Reference Models, Comparison of ISDN, Leased lines and Frame Relay, Introduction to the network Layer and Routing Protocols, Routing, Transport Layer, Functions of TCP/IP and UDP ports.

Chapter 5: Wide Area Network (WAN) Devices

06hr

Routers, Working of the Router, Functionally of Router, Routing Table, Types of Router, Packet Delivery,RoutingMethods,DynamicRouting,StaticRouting,RouterArchitecture,Router Ports, Switching, Queuing, difference between Router, Switch and Hub, Gateways, ISDN, default Gateways.

Chapter6:Network Performance

05hr

Introduction, Network performance Measurement, Performance Measurement Terms, Queuing Models, Components of queuing System, Notation for queues, Simulation, Simulation Models, Steps in simulation, Discrete Event Simulation, NetSim, QOS.

Reference Books:

1. Carrier Oriented program on Computer Networks using NetSim – Study Material Volume – I. Tetcos.
2. Carrier Oriented program on Computer Networks using NetSim – Study Material Volume – II. Tetcos.
3. Netsim Network Simulator for the Ultra computer. By MarcSnir.

4. Tetcos Network Simulator.

NETSIM DPLOMA COURSE PRACTICALS

Duration:02hrs

1experiment/week

Experiment 1:

Networking Commands:

1. **Ip config:** It is a Console Command which can be issued to the command line interpreter to display the network settings currently assigned to any or all network adapters in the machine.

Syntax:

```
ipconfig [/allcompartments] [/? | /all | /renew [adapter] | /release [adapter] | /renew6 [adapter] | /release6 [adapter] | /flushdns | /displaydns | /registerdns | /showclassid adapter | /setclassid adapter [classid] | /showclassid6 adapter | /setclassid6 adapter [classid] ]
```

where adapter Connection name (wildcard characters * and ? allowed, see examples)

/all	Display full configuration information.
/release	Release the IPv4 address for the specified adapter.
/release6	Release theIPv6 address for the specified adapter.

2. **Netstat:** The netstat command is used to display the [TCP/IP](#) network protocol statistics and information.

Syntax:

```
NETSTAT[-a][-b][-e][-f][-n][-o][-pproto][-r][-s][-x][-t][interval]
```

-a	Displays all connections and listening ports.
-e	Displays Ethernet statistics. This option maybe combined with the-soption.
-f	Displays Fully Qualified Domain Names(FQDN)for foreign addresses.

3. **Tracert and traceroute:**The **tracert** command in MS-DOS and Windows(known as **trace route** in Unix-like operating systems) is a useful tool for diagnosing network issues. It allows you to view a listing of how a network packet travels through the network and where it may fail or slow down. Using this information you can determine the computer, or network device causing your connectivity issue.

Syntax:

```
tracert[-d][-hmaximum_hops][-jhost-list][-wtimeout][-R][-Ssrcaddr][-4][-6] target_name
```

-d	Do not resolve addresses to hostnames.
-h maximum_hops	Maximum number of hops to search for target.
-jhost-list	Looses our ceroute a longhost-list(IPv4-only).

Experiment 2:

Networking Commands:

4. **Ping:** Ping is one of the most commonly used network commands that allows you to ping a network IP address. Pinging an IP address helps determine if the network card can communicate in the local network or outside network.

Syntax:

ping [-t] [-a] [-ncount] [-lsize] [-f] [-i TTL] [-v TOS] [-r count] [-scount] [[-j host-list] | [-k host-list]] [-w timeout] [-R] [-S srcaddr] [-4] [-6 target_name]

-t	Pings the specified host until stopped. To see statistics and continue-Type Control-Break ; To stop-press Ctrl+C.
-a	Resolve addresses to hostnames.
-n	Count number of echo requests to send.
-lsize	Send buffer size.

5. **Pathping:** Pathping is an MS-DOS utility available for Microsoft Windows 2000 and Windows XP users. This utility enables a user to find network latency and network loss. **Syntax:**
pathping [-ghost-list] [-hmaximum_hops] [-iaddress] [-n] [-pperiod] [-qnum_queries] [-wtimeout] [-P] [-R] [-T] [-4] [-6] target_name.

-ghost-list	Loose source route a long host-list.
-hmaximum_hops	Maximum number of hops to search for target.
-iaddress	Use the specified source address.

6. **Telnet:** There are also numerous third-party telnet and SSH programs available for connecting to remote computers. Users who use telnet often or want or need additional features should consider a third-party telnet program.

Syntax:

```
telnet host name
```

7. **FTP:** To connect to another computer using FTP at the MS-DOS prompt, command line or Linux shell type **FTP** and press Enter. Once in FTP, use the **open** command to connect to the FTP server, as shown in the following example.

Syntax:

```
open  
ftp.example.comget  
myfile.htm
```

Experiment 3:

Networking Commands:

8. **Route:** This Command to manually configure the routes in the routing table.

Syntax:

ROUTE [-f] [-p] [-4|-6] command [destination] [MASK netmask] [gateway] [METRIC metric]

[IF interface]

-f	Clears the routing tables of all gateway entries. If this is used in conjunction with one of the commands, the tables are cleared before running the command.
-p	When used with the ADD command, makes a route persistent across boots of the system. By default, routes are not preserved when the system is restarted. When used with the PRINT command, displays the list of registered persistent routes. Ignored for all other commands, which always affect the appropriate persistent routes. This option is not supported Windows'95 command

9. **ARP:** Display or manipulate the ARP information on a network device or computer.

Syntax:

ARP -s inet_addr eth_addr [if_addr]

ARP -d inet_addr [if_addr]

ARP -a [inet_addr] [-N if_addr]

-g	Same as -a
inet_addr	Specifies an Internet address.
-N if_addr	Displays the ARP entries for the network interface specified by if_addr.
-d	Deletes the host specified by inet_addr.

10. **NS lookup:** The ns lookup MS-DOS utility that enables a user to do a [reverse lookup](#) on an IP address of a domain or host on a network.

Syntax:

nslookup [-opt ...] # interactive mode using default server

nslookup [-opt ...] - server # interactive mode using 'server'

nslookup [-opt ...] host # just look up 'host' using default server

nslookup [-opt...] host server # just look up 'host' using 'server'

Experiment 4:

Networking Commands:

11. **NBSTAT:** The nbtstat MS-DOS utility that displays protocol statistics and current TCP/IP connections using NBT.

Syntax:

```
nbtstat [ [-a RemoteName] [-A IpAddress] [-c] [-n] [-r] [-R] [-RR] [-s] [-S [interval]] ]
```

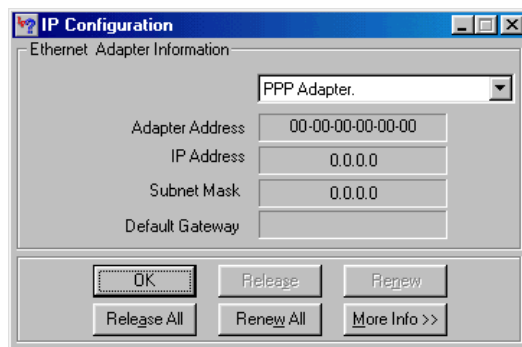
-aRemote Name	Adapter status by name. Lists the name table of the remote Machine identified by machine name <i>Remote Name</i> .
-AIp Address	Adapter status by address. Lists the name table of the remote Machine identified by IP address <i>Ip Address</i> .
-c	Show cached name table. Lists NBT's cache of remote Machine names and their IP addresses.

- 12. Whois:** The whois command available in Unix and Linux variants helps allow a user to identify a domain name. This command provides information about a domain name much like the WHOIS on network solutions. In some cases, the domain information will be provided from Network Solutions.

Syntax:

```
whois[ -h HOST ] [ -p PORT ] [ -aCFHILMmrRSVx ] [ -g SOURCE:FIRST-LAST ][ -i ATTR ][ -S SOURCE ] [ -T TYPE ] object
```

- 13. Winipcfg:** The winipcfg command available in Windows allows a user to display network and network adapter information. Here, a user can find such information as an IP address, Subnet Mask, Gateway, etc.



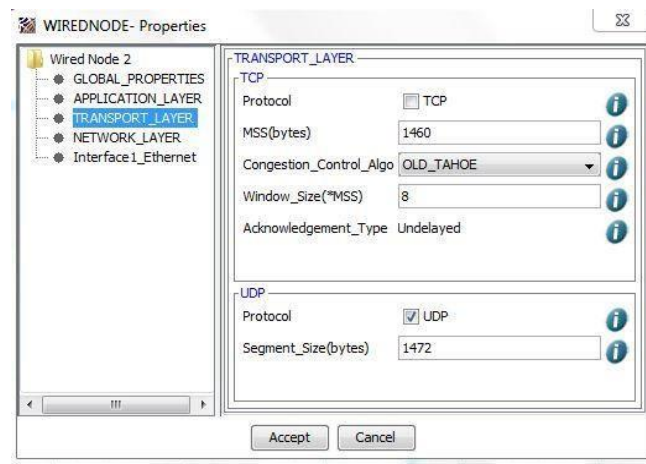
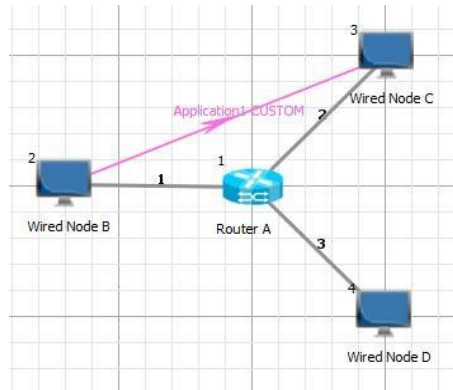
Experiment 5:

Networking Commands:

- 14. Simulate a three nodes point – to – point network with duplex links between them.** Set the queue size and vary the bandwidth and find the number of packets dropped.

Soln: Router forwards packets from one network to another network. When arrival rate of packets is greater than the service (departure) rate, packets get buffered (queued). Once the buffer (queue) is completely filled, all arriving packets will be dropped.

InNetSim, Select“ Simulation----->New →Internetworks”.



Diploma Course

Sl No	Name
1	ANUSHA B H
2	BHAVANA R N
3	BHAVYA P
4	BHUVANA C T
5	CHAITRA
6	CHAITRA B R
7	CHANDANA D
8	CHANDANA K N
9	CHANDANA N
10	DEEPASHREE H
11	DEEPASHREE R
12	GAGANADEEPA N L
13	GAYATHRI K H
14	HAJEERA KHAN
15	HAMSAMURTHY S

31	ROOPASHREE
32	RUCHITHA B M
33	SADIYA KAUSER
34	SAHANA YADAV K M
35	SALMA SIDDIQA
36	SANOBER FATHIMA
37	SHALINI K
38	SHAMSHIYA REHMANI
39	SHILPA H P
40	SHRAVANI V S
41	SUMA A P
42	SUPRIYA H P
43	SUSHMA G T
44	SUSHMA M
45	SUSHMA S A
46	TANASHREE N J

16	JASWINI T		47	TASMIYA NIKHATH
17	KAVITHA S M		48	TEJASHWINI M
18	KIRANA B		49	TEJASWINI M
19	MEGHANA H G		50	TANUSHREE B Y
20	MEGHANA S P		51	VANISHREE J
21	N PAVITHRA		52	VARALAKSHMI M
22	NETHRAVATHI K S		53	VARSHINI
23	PADMAVATHI D G		54	VARSHITHA K
24	PAVITHRA S P		55	VIDYASHREE G N
25	POOJA G		56	VINUTHA D V
26	POOJA T Y		57	YAMUNA K V
27	PUSHPALATHA K R		58	YAMUNA N V
28	R SUSHMA SWARAJ			
29	RAJESHWARI C			
30	RENUKA A			

Time table:

DAY	TIME
Tuesday	10:30-12:30
Thursday	10:30-12:30
Saturday	10:30-12:30

Principal,
Sree Siddaganga College of Arts,
Science and Commerce for Women,
B. H. Road, TUMKUR.

NET-SIM ATTENDANCE REGISTER

2018-2019

Certificate Course

Name of the Institution

Admn. No.	Sl. No.	NAMES	1	2	3	4	5	6	7	8	9	10	11	12	13	14	15	16	17	18	19	20	21	22	23	24	25	26	27	28	29	30	31	No. P
	1	Ajreen Taj	1	2	3	4	5	6	7	8	9	10	11	12																				
	2	Aishwarya Betty	1	2	3	4	5	6	7	8	9	10	11	12																				
	3	Amreen Zehra	1	2	3	4	5	6	7	8	9	10	11	12																				
	4	Anu R	1	2	3	4	5	6	7	8	9	10	11	12																				
	5	Anusha. H.K	1	2	3	4	5	6	7	8	9	10	11	12																				
	6	Bharana. A	1	2	3	4	5	6	7	8	9	10	11	12																				
	7	Bhumiika Jain. P	1	2	3	4	5	6	7	8	9	10	11	12																				
	8	Chandana. A.R	1	2	3	4	5	6	7	8	9	10	11	12																				
	9	Chandana. S	1	2	3	4	5	6	7	8	9	10	11	12																				
	10	Chandana. K.M	1	2	3	4	5	6	7	8	9	10	11	12																				
	11	Chandrakala S	1	2	3	4	5	6	7	8	9	10	11	12																				
	12	Deepika. D	1	2	3	4	5	6	7	8	9	10	11	12																				
	13	Deepthi. B.S	1	2	3	4	5	6	7	8	9	10	11	12																				
	14	Gagana. A.U	1	2	3	4	5	6	7	8	9	10	11	12																				
	15	Hamsareena	1	2	3	4	5	6	7	8	9	10	11	12																				
	16	Kavya. M	1	2	3	4	5	6	7	8	9	10	11	12																				
	17	Kavya. M	1	2	3	4	5	6	7	8	9	10	11	12																				
	18	Kavya. T.R	1	2	3	4	5	6	7	8	9	10	11	12																				
	19	Keerthana D.M	1	2	3	4	5	6	7	8	9	10	11	12																				
	20	Keerthi Shetty. V.N	1	2	3	4	5	6	7	8	9	10	11	12																				
	21	Komala	1	2	3	4	5	6	7	8	9	10	11	12																				
	22	Krupa. H.R	1	2	3	4	5	6	7	8	9	10	11	12																				
	23	Lakshmi. H.	1	2	3	4	5	6	7	8	9	10	11	12																				
	24	Lavanya. V.R	1	2	3	4	5	6	7	8	9	10	11	12																				
	25	Mamatha. C.M	1	2	3	4	5	6	7	8	9	10	11	12																				
	26	Manasa. G.N.	1	2	3	4	5	6	7	8	9	10	11	12																				

- 1) No. at the beginning of the Month
- 2) Admission during the month
- 3) No. Left during month
- 4) No. at the end of the month
- 5) No. of working days

No. Present

Initials

For the month of

Class

Section

Section												16	17	18	19	20	21	22	23	24	25	26	27	28	29	30	31	32				
12	13	14																														
13	14	15																														
13	14	15																														
12	13	14																														
13	14	15																														
11	12	13																														
13	14	15																														
A	13	14																														
15	14	15																														
13	14	15																														
13	14	15																														
13	14	15																														
13	14	15																														
12	13	14																														
A	13	14																														
13	14	15																														
13	14	15																														
13	14	15																														
12	13	14																														
A	13	14																														
13	14	15																														
12	13	14																														
13	14	15																														
13	14	15																														
13	14	15																														
12	13	14																														
A	13	14																														
13	14	15																														
12	13	14																														
13	14	15																														
13	14	15																														
13	14	15																														
12	13	14																														
A	13	14																														
13	14	15																														
12	13	14																														
13	14	15																														
13	14	15																														
13	14	15																														
12	13	14																														
A	13	14																														
13	14	15																														
12	13	14																														
13	14	15																														
13	14	15																														
13	14	15																														
12	13	14																														
A	13	14																														
13	14	15																														
12	13	14																														
13	14	15																														
13	14	15																														
13	14	15																														
12	13	14																														
A	13	14																														
13	14	15																														
12	13	14																														
13	14	15																														
13	14	15																														
13	14	15																														
12	13	14																														
A	13	14																														
13	14	15																														
12	13	14																														
13	14	15																														
13	14	15																														
13	14	15																														
12	13	14																														
A	13	14																														
13	14	15																														
12	13	14																														
13	14	15																														
13	14	15																														
13	14	15																														
12	13	14																														
A	13	14																														
13	14	15																														
12	13	14																														
13	14	15																														
13	14	15																														
13	14	15																														
12	13	14																														
A	13	14																														
13	14	15																														
12	13	14																		</												

Head of the Institution
The Principal
20/11/18

Signature of the Class Teacher

Signature of the

2018-2019
Certificate Course

Name of the Institution												
Admn. No.	Sl. No.	NAMES	1	2	3	4	5	6	7	8	9	10
	27.	Meghana. M.S	1	2	3	4	5	6	7	8	9	10
	28.	Meghana. G.S	1	2	3	4	5	6	7	8	9	10
	29.	Monika. H.J	1	2	3	4	5	6	7	8	9	10
	30.	Monisha. N.S	1	2	3	4	5	6	7	8	9	10
	31.	N. Pushpa	1	2	3	4	5	6	7	8	9	10
	32.	N. R. Tejashwini	1	2	3	4	5	6	7	8	9	10
	33.	N. Shashana	1	2	3	4	5	6	7	8	9	10
	34.	Namratha. S	1	2	3	4	5	6	7	8	9	10
	35.	Nayana. D.K	1	2	3	4	5	6	7	8	9	10
	36.	Nikshitha. K	1	2	3	4	5	6	7	8	9	10
	37.	Poojashree	1	2	3	4	5	6	7	8	9	10
	38.	Rakshitla. A	1	2	3	4	5	6	7	8	9	10
	39.	Rakshitla. H.M	1	2	3	4	5	6	7	8	9	10
	40.	Ranjitha T.K	1	2	3	4	5	6	7	8	9	10
	41.	Rekha. L	1	2	3	4	5	6	7	8	9	10
	42.	S. Divyashree	1	2	3	4	5	6	7	8	9	10
	43.	Sahana. M	1	2	3	4	5	6	7	8	9	10
	44.	Saisree. H.R	1	2	3	4	5	6	7	8	9	10
	45.	Saniya Fathima	1	2	3	4	5	6	7	8	9	10
	46.	Shilpashree. S.R	1	2	3	4	5	6	7	8	9	10
	47.	Shubha. P	1	2	3	4	5	6	7	8	9	10
	48.	Sindhu. G.B	1	2	3	4	5	6	7	8	9	10
	49.	Sneha. H.S	1	2	3	4	5	6	7	8	9	10
	50.	Sushma. R	1	2	3	4	5	6	7	8	9	10
	51.	Supriya. N.N	1	2	3	4	5	6	7	8	9	10
	52.	Tabeer Fathima	1	2	3	4	5	6	7	8	9	10

1) No. at the beginning of the Month	No. Present
2) Admission during the month	
3) No. Left during month	
4) No. at the end of the month	
5) No. of working days	Initials

Class Section

[illegible]

Signature _____

2018-2019
Certificate Course

Class Section

Name of the Institution													
Admn. No.	Sl. No.	NAMES	25	26	27	28	29	30	31	32	33	34	35
	53.	Tanushree C.V	1	2	3	4	5	6	7	8	9	10	11
	54.	Tejashwini	1	2	3	4	5	6	7	8	9	10	11
	55	Thanugakehi V.S	1	2	3	4	5	6	7	8	9	10	11
	56	Thejashwini. M.S	1	2	3	4	5	6	7	8	9	10	11
	57	Vathsala Vadav. Dg	1	2	3	4	5	6	7	8	9	10	11
	58.	Vidya. K.C	1	2	3	4	5	6	7	8	9	10	11
	59	Vidyashree T.R	1	2	3	4	5	6	7	8	9	10	11
	60.	Vidyashree. Y. H.	1	2	3	4	5	6	7	8	9	10	11

(Signature)
 Head of the Department of Postgraduate Studies
 Sri Sathya Sai College for Women
 TUMKUR.

[illegible]

Signature of the Class Teacher

2018-2019

1999

Admn. No.	Sl. No.	NAMES	Name of the institution										
			1	2	3	4	5	6	7	8	9	10	11
	1	Anusha. B.H	1	2	3	4	5	6	7	8	9	10	11
	2	Bhavana. R.N	1	2	3	4	5	6	7	8	9	10	11
	3	Bhanya. P	1	2	3	4	5	6	7	8	9	10	11
	4	Bhuvana. C.T	1	2	3	4	5	6	7	8	9	10	11
	5	Chaitra	1	2	3	4	5	6	7	8	9	10	11
	6	chaitra. B.R	1	2	3	4	5	6	7	8	9	10	11
	7	chandana. D	1	2	3	4	5	6	7	8	9	10	11
	8	chandana K.N	1	2	3	4	5	6	7	8	9	10	11
	9	chandana. N	1	2	3	4	5	6	7	8	9	10	11
	10	De epashree. H	1	2	3	4	5	6	7	8	9	10	11
	11	Deepashree. R	1	2	3	4	5	6	7	8	9	10	11
	12	Gaganadeepa. N.L	1	2	3	4	5	6	7	8	9	10	11
	13	Gayathri. K.H	1	2	3	4	5	6	7	8	9	10	11
	14	Hajeera. Khan	1	2	3	4	5	6	7	8	9	10	11
	15	Hamsa Murthy. S	1	2	3	4	5	6	7	8	9	10	11
	16	Jasusini. T	1	2	3	4	5	6	7	8	9	10	11
	17	Kavitha. S.M	1	2	3	4	5	6	7	8	9	10	11
	18	Kirana. B	1	2	3	4	5	6	7	8	9	10	11
	19	Meghana. H.G	1	2	3	4	5	6	7	8	9	10	11
	20	Meghana. S.P	1	2	3	4	5	6	7	8	9	10	11
	21	N. Parvitha	1	2	3	4	5	6	7	8	9	10	11
	22	Netravathi. K.S	1	2	3	4	5	6	7	8	9	10	11
	23	Padmavathi. D.G	1	2	3	4	5	6	7	8	9	10	11
	24	Parvitha. S.P	1	2	3	4	5	6	7	8	9	10	11
	25	Pooja. G.	1	2	3	4	5	6	7	8	9	10	11
	26	Pooja. T.V	1	2	3	4	5	6	7	8	9	10	11

- 1) No. at the beginning of the Month
- 2) Admission during the month
- 3) No. Left during month
- 4) No. at the end of the month
- 5) No. of working days

No. Present

Initials

For the month of

Class

Section

[illegible]

Head of the Department
Sree Siddaganga College for Women
TUMKUR.

Signature of the Class Teacher

Sign

2018-19
Diploma Course

Admn. No.	Sl. No.	NAMES	1	2	3	4	5	6	7	8	9	10	11	12
27.		Pushpalatha. K.R	1	2	3	4	5	6	7	8	9	10	11	12
28		R. Suthma Sivaraj	1	2	3	4	5	6	7	8	9	10	11	12
29		Rajeshwari c	1	2	3	4	5	6	7	8	9	10	11	12
30		Renuka. A	1	2	3	4	5	6	7	8	9	10	11	12
31		Roopashree	1	2	3	4	5	6	7	8	9	10	11	12
32		Rucheltha. B.M	1	2	3	4	5	6	7	8	9	10	11	12
33		Saditya Kauer	1	2	3	4	5	6	7	8	9	10	11	12
34		Sahana Vadav. K.M	1	2	3	4	5	6	7	8	9	10	11	12
35		Salma Siddiqua	1	2	3	4	5	6	7	8	9	10	11	12
36		Sanober Fathima	1	2	3	4	5	6	7	8	9	10	11	12
37		Shalin ^o . K	1	2	3	4	5	6	7	8	9	10	11	12
38		Shamshiya Rehmani	1	2	3	4	5	6	7	8	9	10	11	12
39		Shilpa. H.P	1	2	3	4	5	6	7	8	9	10	11	12
40		Shravan ⁱ V.S	1	2	3	4	5	6	7	8	9	10	11	12
41		Suma. A.P	1	2	3	4	5	6	7	8	9	10	11	12
42		Supriya. H.P	1	2	3	4	5	6	7	8	9	10	11	12
43		Suthma. G.T	1	2	3	4	5	6	7	8	9	10	11	12
44		Suthma. M	1	2	3	4	5	6	7	8	9	10	11	12
45		Suthma. S.A	1	2	3	4	5	6	7	8	9	10	11	12
46		Tanashree. N.T	1	2	3	4	5	6	7	8	9	10	11	12
47		Tasmiya Nikhath	1	2	3	4	5	6	7	8	9	10	11	12
48		Tejaskini. M	1	2	3	4	5	6	7	8	9	10	11	12
49		Tejaswini. M	1	2	3	4	5	6	7	8	9	10	11	12
50		Tanushree. B.Y	1	2	3	4	5	6	7	8	9	10	11	12
51		Vanishree. J	1	2	3	4	5	6	7	8	9	10	11	12
52		Varalakshmi M	1	2	3	4	5	6	7	8	9	10	11	12

No. Present

Initials

Class Section

[illegible]

Signature of the Class Teacher

Signature of t

2018-19

Diploma Course

Name of the Institution

[illegible]

Head of the Department of Science
Sree Siddaganga College for Women
TUMKUR.

- 1) No. at the beginning of the Month
 2) Admission during the month No. Present
 3) No. Left during month
 4) No. at the end of the month
 5) No. of working days Initials

For the month of

Class

Section

[illegible]



Sree Siddaganga College of Arts, Science and Commerce for Women

B.H. Road, Tumkur-572101.

Re-Accredited by NAAC with "A" Grade

Department of Computer Science

UGC Recognised Career Oriented Programme

NETSIM

COURSES OFFERED

DURATION

1. CERTIFICATE COURSE

1 YEAR

2. DIPLOMA COURSE

1 YEAR

3. ADVANCED DIPLOMA COURSE

1 YEAR

Prof. Mahesha S.

HOD, Dept. of Computer Science



Sree Siddaganga College of Arts, Science and Commerce for Women

B.H. Road, Tumkur-572101.

Re-Accredited by NAAC with "B+" Grade

Department of Computer Science

UGC Recognised Career Oriented Programme

NETSIM

Certificate Distribution Ceremony

Date : 07.08.2019, Wednesday

Time : 12.00 Noon

Venue : Akkamahadevi Sabhangana

Inauguration : **Dr. B.L. Mukundappa**
Associated Professor, USC, Tumkur

Chief Guest : **Dr. Asha Gowda Karegowda**
Associate Professor, SIT, Tumkur

Presided by : **Dr. K.C. Jayaswamy**
Principal, SSCASCW, Tumkur

WELCOMES YOU ALL

HOD & Staff
Dept. of Computer Science







NETSIM COURSE

Sree Siddaganga Education Society (Regd.)

Sree Siddaganga College of Arts, Science and Commerce for Women, Tumakuru

Re-Accredited by NAAC with 'A' Grade

Gandhinagar, B.H. Road, TUMKUR-572102

Certificate

This is to certify that
has successfully completed the **UGC sponsored Career Oriented Program**
"Computer Networking using NETSIM" organized by Department of Computer
Science, Sree Siddaganga College of Arts, Science and Commerce for Women,
Tumkur in fulfillment of **Certificate / Diploma / Advanced Diploma** course
conducted during the year

Coordinator

SAMPLE COPY

Principal

PRINCIPAL,
Sree Siddaganga College of Arts,
Science and Commerce for Women,
B. H. Road, TUMKUR.